

## Product datasheet for **TA346201**

### Fibrinogen alpha chain (FGA) Rabbit Polyclonal Antibody

#### Product data:

Product Type:	Primary Antibodies
Applications:	IHC, WB
Recommended Dilution:	WB, IHC
Reactivity:	Human
Host:	Rabbit
Isotype:	IgG
Clonality:	Polyclonal
Immunogen:	The immunogen for anti-FGA antibody: synthetic peptide directed towards the N terminal of human FGA. Synthetic peptide located within the following region: MFSMRIVCLVLSVGTAWTADSGEGDFLAEGGGVRGPRVVERHQSACKDS
Formulation:	Liquid. Purified antibody supplied in 1x PBS buffer with 0.09% (w/v) sodium azide and 2% sucrose. <i>Note that this product is shipped as lyophilized powder to China customers.</i>
Purification:	Affinity Purified
Conjugation:	Unconjugated
Storage:	Store at -20°C as received.
Stability:	Stable for 12 months from date of receipt.
Predicted Protein Size:	71 kDa
Gene Name:	fibrinogen alpha chain
Database Link:	<a href="#">NP_068657</a> <a href="#">Entrez Gene 2243 Human P02671</a>



[View online »](#)

**Background:**

FGA is the alpha component of fibrinogen, a blood-borne glycoprotein comprised of three pairs of nonidentical polypeptide chains. Following vascular injury, fibrinogen is cleaved by thrombin to form fibrin which is the most abundant component of blood clots. In addition, various cleavage products of fibrinogen and fibrin regulate cell adhesion and spreading, display vasoconstrictor and chemotactic activities, and are mitogens for several cell types. Mutations in its gene lead to several disorders, including dysfibrinogenemia, hypofibrinogenemia, afibrinogenemia and renal amyloidosis. The protein encoded by this gene is the alpha component of fibrinogen, a blood-borne glycoprotein comprised of three pairs of nonidentical polypeptide chains. Following vascular injury, fibrinogen is cleaved by thrombin to form fibrin which is the most abundant component of blood clots. In addition, various cleavage products of fibrinogen and fibrin regulate cell adhesion and spreading, display vasoconstrictor and chemotactic activities, and are mitogens for several cell types. Mutations in this gene lead to several disorders, including dysfibrinogenemia, hypofibrinogenemia, afibrinogenemia and renal amyloidosis. Alternative splicing results in two isoforms which vary in the carboxy-terminus.

**Synonyms:**

Fib2

**Note:**

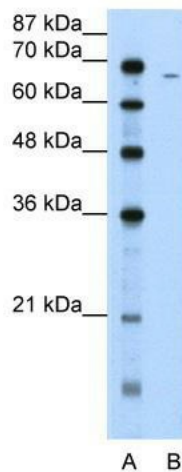
Immunogen Sequence Homology: Human: 100%; Pig: 93%; Bovine: 93%; Rat: 91%; Goat: 91%; Sheep: 91%; Dog: 86%; Mouse: 86%; Horse: 85%

**Protein Families:**

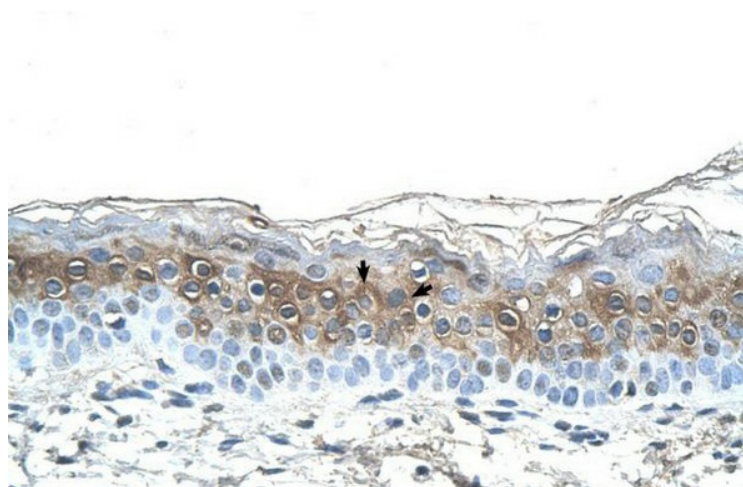
Druggable Genome, Secreted Protein

**Protein Pathways:**

Complement and coagulation cascades

**Product images:**


WB Suggested Anti-FGA Antibody Titration: 5.0 ug/ml; Positive Control: Jurkat cell lysate



Rabbit Anti-FGA Antibody; Paraffin Embedded Tissue: Human Skin; Cellular Data: Squamous epithelial cells; Antibody Concentration: 4.0-8.0 ug/ml; Magnification: 400X