

Product datasheet for **TA346199**

Prothrombin (F2) Rabbit Polyclonal Antibody

Product data:

Product Type:	Primary Antibodies
Applications:	WB
Recommended Dilution:	WB
Reactivity:	Rat
Host:	Rabbit
Isotype:	IgG
Clonality:	Polyclonal
Immunogen:	The immunogen for anti-F2 antibody: synthetic peptide corresponding to a region of Rat. Synthetic peptide located within the following region: CQLWRSRYPHRPDINSTTHPGADLKENFCRNPDSSTSGPWCYTTDPTVRR
Formulation:	Liquid. Purified antibody supplied in 1x PBS buffer with 0.09% (w/v) sodium azide and 2% sucrose. <i>Note that this product is shipped as lyophilized powder to China customers.</i>
Purification:	Affinity Purified
Conjugation:	Unconjugated
Storage:	Store at -20°C as received.
Stability:	Stable for 12 months from date of receipt.
Predicted Protein Size:	70 kDa
Gene Name:	coagulation factor II, thrombin
Database Link:	NP_000497 Entrez Gene 29251 Rat P00734
Background:	F2 catalyzes the preferential cleavage of Arg-Gly; activates fibrinogen to fibrin and releases fibrinopeptides A and B; involved in blood coagulation and wound repair.
Synonyms:	PT; RPRGL2; THPH1
Note:	Immunogen Sequence Homology: Dog: 100%; Human: 100%; Mouse: 100%; Bovine: 100%; Horse: 93%; Sheep: 93%; Pig: 92%; Rat: 86%; Rabbit: 86%; Guinea pig: 80%

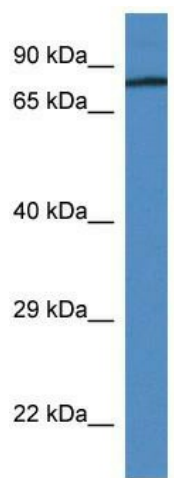


[View online »](#)

Protein Families: Druggable Genome, Protease, Secreted Protein

Protein Pathways: Complement and coagulation cascades, Neuroactive ligand-receptor interaction, Regulation of actin cytoskeleton

Product images:



WB Suggested Anti-F2 Antibody; Titration: 1.0 ug/ml; Positive Control: Rat Lung