

Product datasheet for **TA346196**

EPX Rabbit Polyclonal Antibody

Product data:

| | |
|-------------------------|--|
| Product Type: | Primary Antibodies |
| Applications: | WB |
| Recommended Dilution: | WB |
| Reactivity: | Human |
| Host: | Rabbit |
| Isotype: | IgG |
| Clonality: | Polyclonal |
| Immunogen: | The immunogen for anti-EPX antibody: synthetic peptide directed towards the middle region of human EPX. Synthetic peptide located within the following region: LAFRFGHTMLQPFMFRLDSQYRASAPNSHVPLSSAFFASWRIVYEGGIDP |
| Formulation: | Liquid. Purified antibody supplied in 1x PBS buffer with 0.09% (w/v) sodium azide and 2% sucrose. <i>Note that this product is shipped as lyophilized powder to China customers.</i> |
| Purification: | Affinity Purified |
| Conjugation: | Unconjugated |
| Storage: | Store at -20°C as received. |
| Stability: | Stable for 12 months from date of receipt. |
| Predicted Protein Size: | 53 kDa |
| Gene Name: | eosinophil peroxidase |
| Database Link: | NP_000493 Entrez Gene 8288 Human P11678 |
| Background: | EPX belongs to the peroxidase family, XPO subfamily. Defects in EPX are the cause of eosinophil peroxidase deficiency (EPD). |
| Synonyms: | EPO; EPP; EPX-PEN |
| Note: | Immunogen Sequence Homology: Pig: 100%; Rat: 100%; Horse: 100%; Human: 100%; Mouse: 100%; Guinea pig: 100%; Rabbit: 86% |

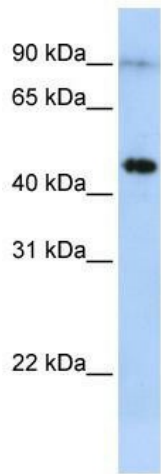


[View online »](#)

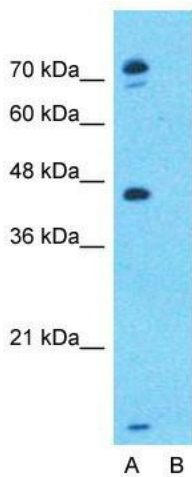
Protein Families: Druggable Genome

Protein Pathways: Asthma

Product images:



WB Suggested Anti-EPX Antibody Titration: 0.2-1 ug/ml; ELISA Titer: 1: 62500; Positive Control: MCF7 cell lysate



Anti-EPX Western Blot & Peptide Block Validation

Lysate: MCF7 Cell

Lane A: Primary Antibody
Lane B: Primary Antibody + Blocking Peptide

Primary Antibody Concentration: 1.0µg/ml
Peptide Concentration: 5.0µg/ml
Lysate Quantity: 25µg/lane
Gel Concentration: 12%

Host: Rabbit; Target Name: EPX; Sample Tissue: MCF7; Lane A: Primary Antibody; Lane B: Primary Antibody + Blocking Peptide; Primary Antibody Concentration: 1 ug/ml; Peptide Concentration: 5 ug/ml; Lysate Quantity: 25 ug/lane/lane; Gel Concentration: 0.12