

Product datasheet for **TA346194**

ABCB4 Rabbit Polyclonal Antibody

Product data:

Product Type:	Primary Antibodies
Applications:	WB
Recommended Dilution:	WB
Reactivity:	Human
Host:	Rabbit
Isotype:	IgG
Clonality:	Polyclonal
Immunogen:	The immunogen for anti-ABCB4 antibody: synthetic peptide directed towards the middle region of human ABCB4. Synthetic peptide located within the following region: GRTCIVIAHRLSTIQNADLIVVFQNGRVKEHGHQQLLAQKGIYFSMVSV
Formulation:	Liquid. Purified antibody supplied in 1x PBS buffer with 0.09% (w/v) sodium azide and 2% sucrose. <i>Note that this product is shipped as lyophilized powder to China customers.</i>
Purification:	Affinity Purified
Conjugation:	Unconjugated
Storage:	Store at -20°C as received.
Stability:	Stable for 12 months from date of receipt.
Predicted Protein Size:	141 kDa
Gene Name:	ATP binding cassette subfamily B member 4
Database Link:	NP_000434 Entrez Gene 5244 Human P21439
Background:	ABCB4, a membrane-associated protein, is a member of the superfamily of ATP-binding cassette (ABC) transporters. ABC proteins transport various molecules across extra- and intra-cellular membranes. This protein is a member of the MDR/TAP subfamily. Member
Synonyms:	3; ABC21; GBD1; ICP3; MDR2; MDR3; PFIC-3; PGY3
Note:	Immunogen Sequence Homology: Rat: 100%; Human: 100%; Dog: 93%; Sheep: 93%; Bovine: 93%; Pig: 92%; Mouse: 92%; Guinea pig: 92%; Horse: 86%; Rabbit: 86%

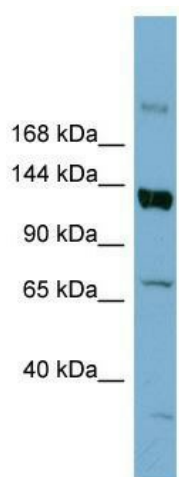


[View online »](#)

Protein Families: Druggable Genome, Transmembrane

Protein Pathways: ABC transporters

Product images:



WB Suggested Anti-ABCB4 Antibody Titration: 0.2-1 ug/ml; ELISA Titer: 1: 312500; Positive Control: HT1080 cell lysate. ABCB4 is supported by BioGPS gene expression data to be expressed in HT1080