

Product datasheet for **TA346191**

Loricrin (LOR) Rabbit Polyclonal Antibody

Product data:

Product Type:	Primary Antibodies
Applications:	IHC, WB
Recommended Dilution:	WB, IHC
Reactivity:	Human
Host:	Rabbit
Isotype:	IgG
Clonality:	Polyclonal
Immunogen:	The immunogen for anti-LOR antibody: synthetic peptide directed towards the N terminal of human LOR. Synthetic peptide located within the following region: GYSGGGCGGGSSGGGGGGIGGCCGGGSGGSVKYSGGGGSSGGGSGCFSSG
Formulation:	Liquid. Purified antibody supplied in 1x PBS buffer with 0.09% (w/v) sodium azide and 2% sucrose. <i>Note that this product is shipped as lyophilized powder to China customers.</i>
Purification:	Affinity Purified
Conjugation:	Unconjugated
Storage:	Store at -20°C as received.
Stability:	Stable for 12 months from date of receipt.
Predicted Protein Size:	35 kDa
Gene Name:	loricrin
Database Link:	NP_000418 Entrez Gene 4014 Human P23490



[View online »](#)

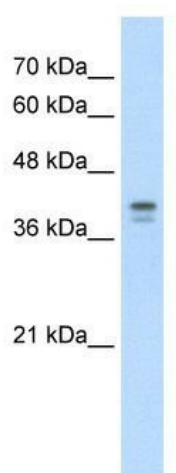
Background: LOR is a major protein component of the cornified cell envelope found in terminally differentiated epidermal cells. Mutations in this gene are associated with Vohwinkel's syndrome and progressive symmetric erythrokeratoderma, both inherited skin diseases. LOR encodes loricrin, a major protein component of the cornified cell envelope found in terminally differentiated epidermal cells. Mutations in LOR may be the cause of both Vohwinkel's syndrome and progressive symmetric erythrokeratoderma, both inherited skin diseases.

Synonyms: MGC111513

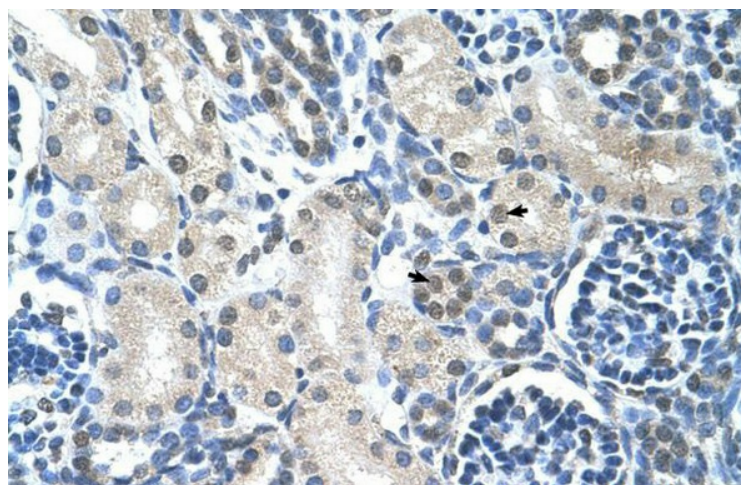
Note: Immunogen Sequence Homology: Human: 100%; Bovine: 93%; Mouse: 86%; Pig: 75%; Guinea pig: 75%

Protein Families: Druggable Genome

Product images:



WB Suggested Anti-LOR Antibody Titration: 5.0 ug/ml; Positive Control: HepG2 cell lysate



Rabbit Anti-LOR Antibody; Paraffin Embedded Tissue: Human Kidney; Cellular Data: Epithelial cells of renal tubule; Antibody Concentration: 4.0-8.0 ug/ml; Magnification: 400X