

Product datasheet for **TA346190**

Cytokeratin 2 (KRT2) Rabbit Polyclonal Antibody

Product data:

Product Type:	Primary Antibodies
Applications:	IHC, WB
Recommended Dilution:	WB, IHC
Reactivity:	Human
Host:	Rabbit
Isotype:	IgG
Clonality:	Polyclonal
Immunogen:	The immunogen for anti-KRT2A antibody: synthetic peptide directed towards the middle region of human KRT2A. Synthetic peptide located within the following region: EVKAQYEEIAQRSKEEAEALYHSKYEELQVTVGRHGDSLKEIKIEISELN
Formulation:	Liquid. Purified antibody supplied in 1x PBS buffer with 0.09% (w/v) sodium azide and 2% sucrose. <i>Note that this product is shipped as lyophilized powder to China customers.</i>
Purification:	Affinity Purified
Conjugation:	Unconjugated
Storage:	Store at -20°C as received.
Stability:	Stable for 12 months from date of receipt.
Predicted Protein Size:	70 kDa
Gene Name:	keratin 2
Database Link:	NP_000414 Entrez Gene 3849 Human P35908



[View online »](#)

Background:

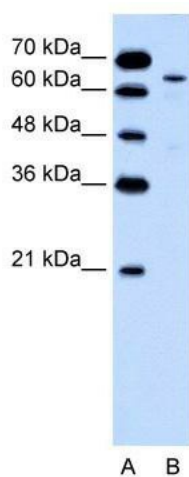
KRT2A is a member of the keratin gene family. The type II cytokeratins consist of basic or neutral proteins which are arranged in pairs of heterotypic keratin chains coexpressed during differentiation of simple and stratified epithelial tissues. This type II cytokeratin is expressed largely in the upper spinous layer of epidermal keratinocytes and mutations in this gene have been associated with bullous congenital ichthyosiform erythroderma. The protein encoded by this gene is a member of the keratin gene family. The type II cytokeratins consist of basic or neutral proteins which are arranged in pairs of heterotypic keratin chains coexpressed during differentiation of simple and stratified epithelial tissues. This type II cytokeratin is expressed largely in the upper spinous layer of epidermal keratinocytes and mutations in this gene have been associated with bullous congenital ichthyosiform erythroderma. The type II cytokeratins are clustered in a region of chromosome 12q12-q13.

Synonyms:

CK-2e; K2e; KRT2A; KRT2E; KRTE

Note:

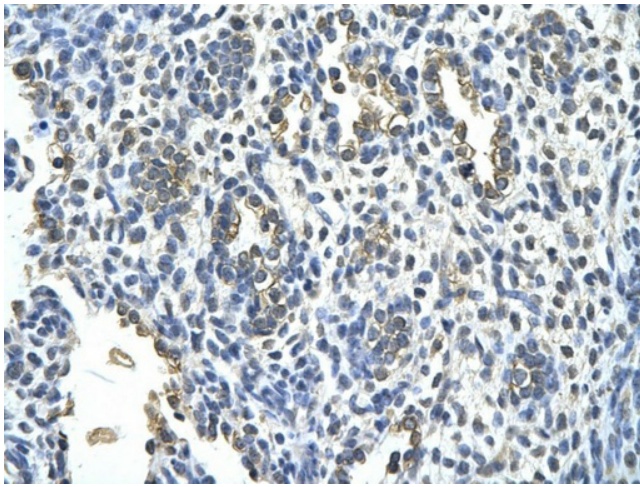
Immunogen Sequence Homology: Dog: 100%; Human: 100%; Pig: 93%; Mouse: 93%; Horse: 88%; Rat: 81%; Bovine: 79%; Rabbit: 79%; Guinea pig: 79%

Product images:

WB Suggested Anti-KRT2A Antibody Titration: 0.2-1 ug/ml; Positive Control: Jurkat cell lysate



Rabbit Anti-KRT2 Antibody; Paraffin Embedded Tissue: Human Intestine; Cellular Data: Epithelial cells of intestinal villas; Antibody Concentration: 4.0-8.0 ug/ml; Magnification: 400X



Rabbit Anti-KRT2 Antibody; Paraffin Embedded Tissue: Human alveolar cell; Cellular Data: Epithelial cells of renal tubule; Antibody Concentration: 4.0-8.0 ug/ml; Magnification: 400X