

Product datasheet for **TA346189**

Cytokeratin 17 (KRT17) Rabbit Polyclonal Antibody

Product data:

Product Type:	Primary Antibodies
Applications:	IHC, WB
Recommended Dilution:	WB, IHC
Reactivity:	Human
Host:	Rabbit
Isotype:	IgG
Clonality:	Polyclonal
Immunogen:	The immunogen for anti-KRT17 antibody: synthetic peptide directed towards the C terminal of human KRT17. Synthetic peptide located within the following region: IATYRRLLLEGEDAHLTQYKKEPVTTRQVRTIVEEVQDGKVISSREQVHQT
Formulation:	Liquid. Purified antibody supplied in 1x PBS buffer with 0.09% (w/v) sodium azide and 2% sucrose. <i>Note that this product is shipped as lyophilized powder to China customers.</i>
Purification:	Affinity Purified
Conjugation:	Unconjugated
Storage:	Store at -20°C as received.
Stability:	Stable for 12 months from date of receipt.
Predicted Protein Size:	48 kDa
Gene Name:	keratin 17
Database Link:	NP_000413 Entrez Gene 3872 Human Q04695
Background:	KRT17 is type I intermediate filament chain keratin 17, expressed in nail bed, hair follicle, sebaceous glands, and other epidermal appendages. Mutations in its gene lead to Jackson-Lawler type pachyonychia congenita and steatocystoma multiplex. KRT17 encodes the type I intermediate filament chain keratin 17, expressed in nail bed, hair follicle, sebaceous glands, and other epidermal appendages. Mutations in this gene lead to Jackson-Lawler type pachyonychia congenita and steatocystoma multiplex.

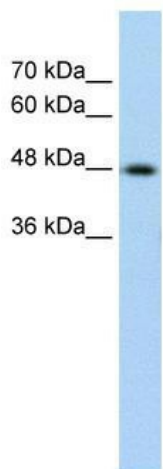


[View online »](#)

Synonyms: 39.1; CK-17; K17; PC; PC2; PCHC1

Note: Immunogen Sequence Homology: Dog: 100%; Rat: 100%; Human: 100%; Mouse: 100%; Rabbit: 100%; Pig: 93%; Horse: 93%; Sheep: 93%; Bovine: 93%; Zebrafish: 92%

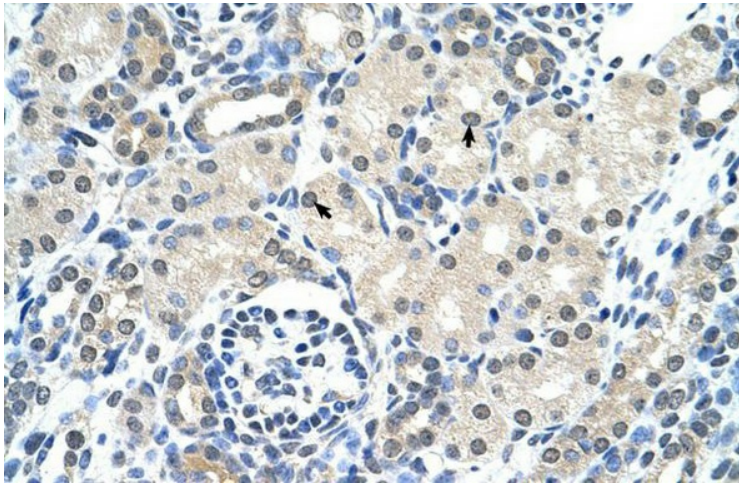
Product images:



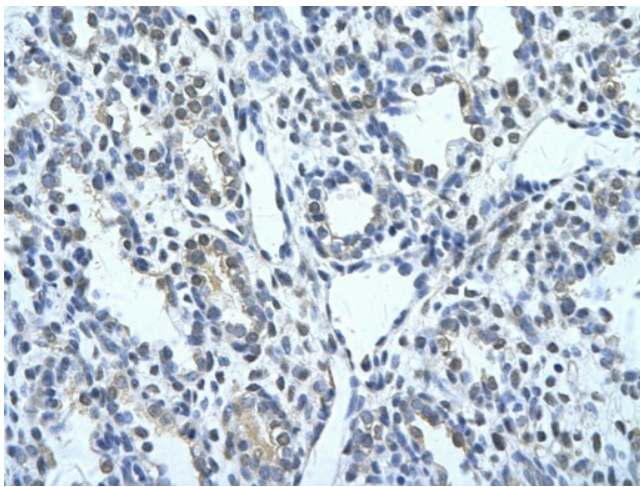
WB Suggested Anti-KRT17 Antibody Titration: 0.2-1 ug/ml; Positive Control: HepG2 cell lysate



Human HeLa



Rabbit Anti-KRT17 Antibody; Paraffin Embedded Tissue: Human Kidney; Cellular Data: Epithelial cells of renal tubule; Antibody Concentration: 4.0-8.0 ug/ml; Magnification: 400X



Rabbit Anti-KRT17 Antibody; Paraffin Embedded Tissue: Human alveolar cell; Cellular Data: Epithelial cells of renal tubule; Antibody Concentration: 4.0-8.0 ug/ml; Magnification: 400X