

## Product datasheet for **TA346188**

### Cytokeratin 19 (KRT19) Rabbit Polyclonal Antibody

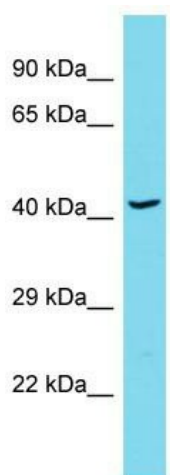
#### Product data:

Product Type:	Primary Antibodies
Applications:	WB
Recommended Dilution:	WB
Reactivity:	Human
Host:	Rabbit
Isotype:	IgG
Clonality:	Polyclonal
Immunogen:	The immunogen for Anti-KRT19 antibody is: synthetic peptide directed towards the middle region of Human KRT19. Synthetic peptide located within the following region: DMRSQYEVMAEQNRKDAEAWFTSRTEELNREVGHTTEQLQMSRSEVTDLR
Formulation:	Liquid. Purified antibody supplied in 1x PBS buffer with 0.09% (w/v) sodium azide and 2% sucrose. <i>Note that this product is shipped as lyophilized powder to China customers.</i>
Purification:	Affinity Purified
Conjugation:	Unconjugated
Storage:	Store at -20°C as received.
Stability:	Stable for 12 months from date of receipt.
Predicted Protein Size:	44 kDa
Gene Name:	keratin 19
Database Link:	<a href="#">NP_002267</a> <a href="#">Entrez Gene 3880 Human P08727</a>
Background:	KRT19 involved in the organization of myofibers. Together with KRT8, KRT19 helps to link the contractile apparatus to dystrophin at the costameres of striated muscle.
Synonyms:	CK19; K1CS; K19
Note:	Immunogen Sequence Homology: Dog: 100%; Horse: 100%; Human: 100%; Rabbit: 100%; Pig: 93%; Rat: 93%; Mouse: 92%; Bovine: 86%; Guinea pig: 85%; Goat: 77%; Sheep: 77%



[View online »](#)

## Product images:



Host: Rabbit

Target Name: KRT19

Sample Tissue: Thymus Tumor Lysate

Antibody Dilution: 1.0 $\mu$ g/ml

Host: Rabbit; Target Name: KRT19; Sample  
Tissue: Thymus Tumor lysates; Antibody Dilution:  
1.0 ug/ml