

Product datasheet for **TA346185**

HSD17B1 Rabbit Polyclonal Antibody

Product data:

Product Type:	Primary Antibodies
Applications:	IHC, WB
Recommended Dilution:	WB, IHC
Reactivity:	Human, Mouse
Host:	Rabbit
Isotype:	IgG
Clonality:	Polyclonal
Immunogen:	The immunogen for anti-HSD17B1 antibody: synthetic peptide directed towards the N terminal of human HSD17B1. Synthetic peptide located within the following region: MARTVVLITGCSSGIGLHLAVRLASDPSQSFKYATLRDLKTQGRLWEAA
Formulation:	Liquid. Purified antibody supplied in 1x PBS buffer with 0.09% (w/v) sodium azide and 2% sucrose. <i>Note that this product is shipped as lyophilized powder to China customers.</i>
Purification:	Affinity Purified
Conjugation:	Unconjugated
Storage:	Store at -20°C as received.
Stability:	Stable for 12 months from date of receipt.
Predicted Protein Size:	36 kDa
Gene Name:	hydroxysteroid (17-beta) dehydrogenase 1
Database Link:	NP_000404 Entrez Gene 15485 Mouse Entrez Gene 3292 Human P14061
Background:	HSD17B1 is favors the reduction of estrogens and androgens. It also has 20-alpha-HSD activity. It uses preferentially NADH.
Synonyms:	EDH17B2; EDHB17; HSD17; SDR28C1
Note:	Immunogen Sequence Homology: Dog: 100%; Pig: 100%; Rat: 100%; Horse: 100%; Human: 100%; Mouse: 100%; Bovine: 100%; Rabbit: 100%; Guinea pig: 91%

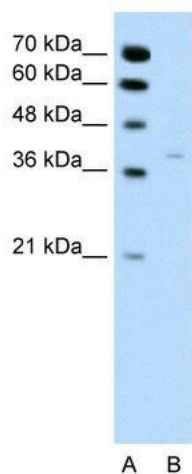


[View online »](#)

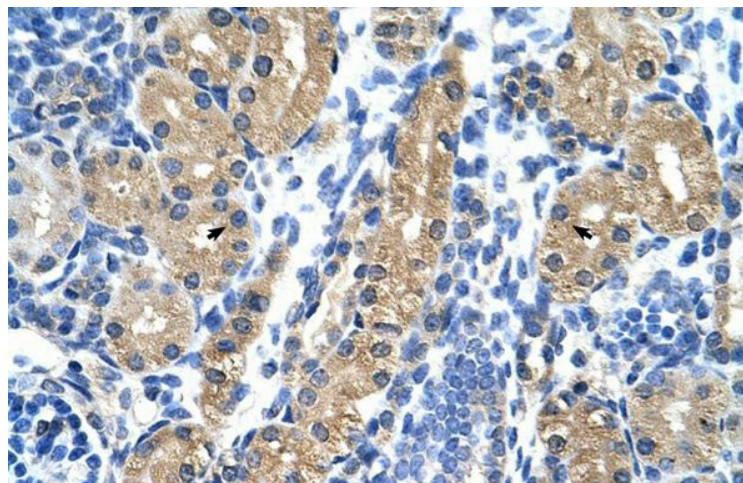
Protein Families: Druggable Genome

Protein Pathways: Androgen and estrogen metabolism, Metabolic pathways

Product images:



WB Suggested Anti-HSD17B1 Antibody Titration: 0.2-1 ug/ml; Positive Control: Jurkat cell lysate



Rabbit Anti-HSD17B1 Antibody; Paraffin Embedded Tissue: Human Kidney; Cellular Data: Epithelial cells of renal tubule; Antibody Concentration: 4.0-8.0 ug/ml; Magnification: 400X