

Product datasheet for **TA346180**

TSH Receptor (TSHR) Rabbit Polyclonal Antibody

Product data:

Product Type:	Primary Antibodies
Applications:	WB
Recommended Dilution:	WB
Reactivity:	Human
Host:	Rabbit
Isotype:	IgG
Clonality:	Polyclonal
Immunogen:	The immunogen for anti-TSHR antibody: synthetic peptide directed towards the N terminal of human TSHR. Synthetic peptide located within the following region: LTLKLYNNGFTSVQGYAFNGTKLDAVYLNKNKYLTVIDKDAFGGVYSGPS
Formulation:	Liquid. Purified antibody supplied in 1x PBS buffer with 0.09% (w/v) sodium azide and 2% sucrose. <i>Note that this product is shipped as lyophilized powder to China customers.</i>
Purification:	Affinity Purified
Conjugation:	Unconjugated
Storage:	Store at -20°C as received.
Stability:	Stable for 12 months from date of receipt.
Predicted Protein Size:	87 kDa
Gene Name:	thyroid stimulating hormone receptor
Database Link:	NP_000360 Entrez Gene 7253 Human P16473
Background:	TSHR is receptor for thyrothopin. It plays a central role in controlling thyroid cell metabolism. The activity of this receptor is mediated by G proteins which activate adenylate cyclase. It also acts as a receptor for thyrostimulin (GPA2+GPB5).
Synonyms:	CHNG1; hTSHR-I; LGR3
Note:	Immunogen Sequence Homology: Pig: 100%; Human: 100%; Mouse: 100%; Dog: 92%; Rat: 92%; Horse: 92%; Sheep: 92%; Bovine: 92%; Rabbit: 92%; Guinea pig: 92%



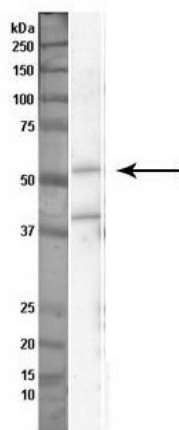
[View online »](#)

Protein Families: Druggable Genome, GPCR, Transmembrane

Protein Pathways: Autoimmune thyroid disease, Neuroactive ligand-receptor interaction

Product images:

TSHR



Sample Type: Nthy-ori cell lysate (50ug); Primary Dilution: 1: 1000; Secondary Antibody: anti-rabbit HRP; Secondary Dilution: 1: 2000; Image Submitted By: Anonymous



WB Suggested Anti-TSHR Antibody Titration: 0.2-1 ug/ml; ELISA Titer: 1: 312500; Positive Control: HeLa cell lysate