

Product datasheet for **TA346178**

Steroid sulfatase (STS) Rabbit Polyclonal Antibody

Product data:

Product Type:	Primary Antibodies
Applications:	WB
Recommended Dilution:	WB
Reactivity:	Human
Host:	Rabbit
Isotype:	IgG
Clonality:	Polyclonal
Immunogen:	The immunogen for anti-STS antibody: synthetic peptide directed towards the C terminal of human STS. Synthetic peptide located within the following region: LLFDISKDPRERNPLTPASEPRFYEILKVMQEAAADRHTQTLPEVPDQFSW
Formulation:	Liquid. Purified antibody supplied in 1x PBS buffer with 0.09% (w/v) sodium azide and 2% sucrose. <i>Note that this product is shipped as lyophilized powder to China customers.</i>
Purification:	Affinity Purified
Conjugation:	Unconjugated
Storage:	Store at -20°C as received.
Stability:	Stable for 12 months from date of receipt.
Predicted Protein Size:	64 kDa
Gene Name:	steroid sulfatase (microsomal), isozyme S
Database Link:	NP_000342 Entrez Gene 412 Human P08842
Background:	STS catalyzes the conversion of sulfated steroid precursors to estrogens during pregnancy. The protein is found in the endoplasmic reticulum, where it acts as a homodimer. Mutations in its gene are known to cause X-linked ichthyosis. The protein encoded by this gene catalyzes the conversion of sulfated steroid precursors to estrogens during pregnancy. The encoded protein is found in the endoplasmic reticulum, where it acts as a homodimer. Mutations in this gene are known to cause X-linked ichthyosis (XLI).



[View online »](#)

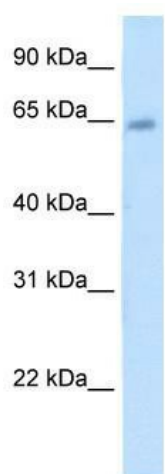
Synonyms: ARSC; ARSC1; ASC; ES; SSDD; XLI

Note: Immunogen Sequence Homology: Horse: 100%; Human: 100%; Bovine: 100%; Pig: 77%; Rat: 77%; Guinea pig: 77%

Protein Families: Druggable Genome, Transmembrane

Protein Pathways: Androgen and estrogen metabolism

Product images:



WB Suggested Anti-STS Antibody Titration: 5.0 ug/ml; Positive Control: Human Placenta