

Product datasheet for **TA346176**

SLC2A2 Rabbit Polyclonal Antibody

Product data:

Product Type:	Primary Antibodies
Applications:	WB
Recommended Dilution:	WB
Reactivity:	Human
Host:	Rabbit
Isotype:	IgG
Clonality:	Polyclonal
Immunogen:	The immunogen for anti-SLC2A2 antibody: synthetic peptide directed towards the N terminal of human SLC2A2. Synthetic peptide located within the following region: ITAVLGSFQFGYDIGVINAPQQVIISHYRHVPLGVLDDRKAINNYVINST
Formulation:	Liquid. Purified antibody supplied in 1x PBS buffer with 0.09% (w/v) sodium azide and 2% sucrose. <i>Note that this product is shipped as lyophilized powder to China customers.</i>
Purification:	Affinity Purified
Conjugation:	Unconjugated
Storage:	Store at -20°C as received.
Stability:	Stable for 12 months from date of receipt.
Predicted Protein Size:	58 kDa
Gene Name:	solute carrier family 2 member 2
Database Link:	NP_000331 Entrez Gene 6514 Human P11168



[View online »](#)

Background:

Glucose transporter 2 isoform is an integral plasma membrane glycoprotein of the liver, islet beta cells, intestine, and kidney epithelium. It mediates facilitated bidirectional glucose transport. Because of its low affinity for glucose, it has been suggested as a glucose sensor. Glucose transporter 2 isoform is an integral plasma membrane glycoprotein of the liver, islet beta cells, intestine, and kidney epithelium. It mediates facilitated bidirectional glucose transport. Because of its low affinity for glucose, it has been suggested as a glucose sensor.

Synonyms:

GLUT2

Note:

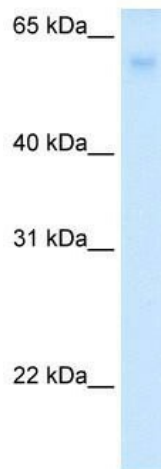
Immunogen Sequence Homology: Pig: 100%; Rat: 100%; Horse: 100%; Human: 100%; Mouse: 100%; Sheep: 92%; Bovine: 92%; Dog: 79%; Guinea pig: 79%

Protein Families:

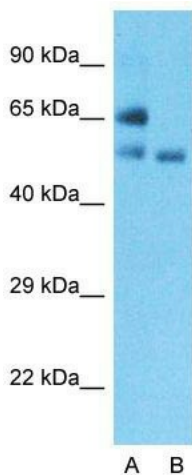
Druggable Genome, ES Cell Differentiation/IPS, Transmembrane

Protein Pathways:

Maturity onset diabetes of the young, Type II diabetes mellitus

Product images:


WB Suggested Anti-SLC2A2 Antibody Titration: 0.2-1 ug/ml; Positive Control: Human Liver


Anti-SLC2A2 Western Blot & Peptide Block Validation

Lysate: Fetal Lung

Lane A: Primary Antibody
Lane B: Primary Antibody + Blocking Peptide

Primary Antibody Concentration: 1.0 µg/ml
Peptide Concentration: 5.0 µg/ml
Lysate Quantity: 25 µg/lane
Gel Concentration: 12%

Host: Rabbit; Target Name: SLC2A2; Sample Tissue: Fetal Lung; Lane A: Primary Antibody; Lane B: Primary Antibody + Blocking Peptide; Primary Antibody Concentration: 1 ug/ml; Peptide Concentration: 5 ug/ml; Lysate Quantity: 25 ug/lane; Gel Concentration: 0.12%