

Product datasheet for **TA346175**

RHAG Rabbit Polyclonal Antibody

Product data:

Product Type:	Primary Antibodies
Applications:	WB
Recommended Dilution:	WB
Reactivity:	Human
Host:	Rabbit
Isotype:	IgG
Clonality:	Polyclonal
Immunogen:	The immunogen for anti-RHAG antibody: synthetic peptide directed towards the middle region of human RHAG. Synthetic peptide located within the following region: FGAVLGKTSPTQMLIMTILEIVFFAHNEYLVSEIFKASDIGASMTIHAFG
Formulation:	Liquid. Purified antibody supplied in 1x PBS buffer with 0.09% (w/v) sodium azide and 2% sucrose. <i>Note that this product is shipped as lyophilized powder to China customers.</i>
Purification:	Affinity Purified
Conjugation:	Unconjugated
Storage:	Store at -20°C as received.
Stability:	Stable for 12 months from date of receipt.
Predicted Protein Size:	45 kDa
Gene Name:	Rh-associated glycoprotein
Database Link:	NP_000315 Entrez Gene 6005 Human Q02094



[View online »](#)

Background:

The Rh blood group antigens are associated with human erythrocyte membrane proteins of approximately 30 kD, the so-called Rh30 polypeptides. Heterogeneously glycosylated membrane proteins of 50 and 45 kD, the Rh50 glycoproteins, are coprecipitated with the Rh30 polypeptides on immunoprecipitation with anti-Rh-specific mono- and polyclonal antibodies. The Rh antigens appear to exist as a multisubunit complex of CD47, LW, glycophorin B, and play a critical role in the Rh50 glycoprotein. The Rh blood group antigens (MIM 111700) are associated with human erythrocyte membrane proteins of approximately 30 kD, the so-called Rh30 polypeptides. Heterogeneously glycosylated membrane proteins of 50 and 45 kD, the Rh50 glycoproteins, are coprecipitated with the Rh30 polypeptides on immunoprecipitation with anti-Rh-specific mono- and polyclonal antibodies. The Rh antigens appear to exist as a multisubunit complex of CD47 (MIM 601028), LW (MIM 111250), glycophorin B (MIM 111740), and play a critical role in the Rh50 glycoprotein. [supplied by OMIM]

Synonyms:

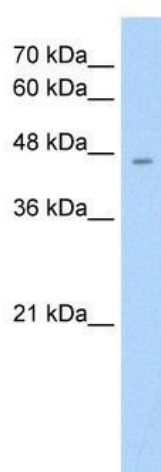
CD241; RH2; Rh50; RH50A; Rh50GP; SLC42A1

Note:

Immunogen Sequence Homology: Human: 100%; Rabbit: 93%; Horse: 86%; Rat: 85%; Dog: 79%; Pig: 79%; Guinea pig: 79%; Mouse: 77%

Protein Families:

Druggable Genome, Transmembrane

Product images:

WB Suggested Anti-RHAG Antibody Titration: 1.25 ug/ml; Positive Control: HepG2 cell lysate