

## Product datasheet for **TA346174**

### Protein C (PROC) Rabbit Polyclonal Antibody

#### Product data:

Product Type:	Primary Antibodies
Applications:	WB
Recommended Dilution:	WB
Reactivity:	Human
Host:	Rabbit
Isotype:	IgG
Clonality:	Polyclonal
Immunogen:	The immunogen for anti-PROC antibody: synthetic peptide directed towards the middle region of human PROC. Synthetic peptide located within the following region: PCGRPWKRMEEKRSHLKRDTEDQEDQVDPRLIDGKMTRRGDSPWQVLLD
Formulation:	Liquid. Purified antibody supplied in 1x PBS buffer with 0.09% (w/v) sodium azide and 2% sucrose. <i>Note that this product is shipped as lyophilized powder to China customers.</i>
Purification:	Affinity Purified
Conjugation:	Unconjugated
Storage:	Store at -20°C as received.
Stability:	Stable for 12 months from date of receipt.
Predicted Protein Size:	52 kDa
Gene Name:	protein C, inactivator of coagulation factors Va and VIIIa
Database Link:	<a href="#">NP_000303</a> <a href="#">Entrez Gene 5624 Human P04070</a>
Background:	Protein C is a vitamin K-dependent serine protease that regulates blood coagulation by inactivating factors Va and VIIIa in the presence of calcium ions and phospholipids.
Synonyms:	APC; PC; PROC1; THPH3; THPH4
Note:	Immunogen Sequence Homology: Human: 100%; Horse: 79%
Protein Families:	Druggable Genome, Protease



[View online »](#)

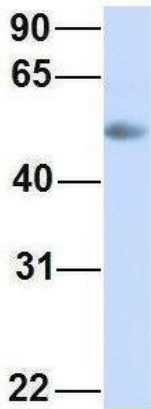
Protein Pathways: Complement and coagulation cascades

Product images:



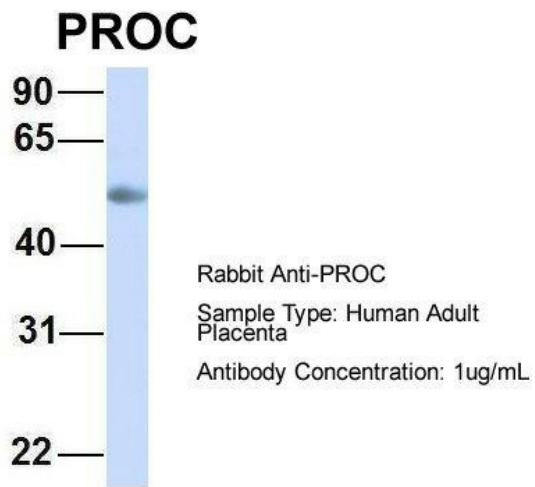
WB Suggested Anti-PROC Antibody Titration: 0.2-1 ug/ml; ELISA Titer: 1: 62500; Positive Control: MCF7 cell lysate

**PROC**



Rabbit Anti-PROC  
Sample Type: Human Adult Placenta  
Antibody Concentration: 1ug/mL

Host: Rabbit; Target Name: PROC; Sample Tissue: Human Adult Placenta; Antibody Dilution: 1.0 ug/ml



Host: Rabbit; Target Name: PROC; Sample Tissue: Human Adult Placenta; Antibody Dilution: 1.0 ug/ml