

Product datasheet for **TA346172**

Pyruvate Kinase (PKLR) Rabbit Polyclonal Antibody

Product data:

Product Type:	Primary Antibodies
Applications:	IHC, WB
Recommended Dilution:	WB, IHC
Reactivity:	Human
Host:	Rabbit
Isotype:	IgG
Clonality:	Polyclonal
Immunogen:	The immunogen for anti-PKLR antibody: synthetic peptide directed towards the N terminal of human PKLR. Synthetic peptide located within the following region: STSIATIGPASRSVERLKEMIKAGMNIARLNFSHGSHEYHAESIANVRE
Formulation:	Liquid. Purified antibody supplied in 1x PBS buffer with 0.09% (w/v) sodium azide and 2% sucrose. <i>Note that this product is shipped as lyophilized powder to China customers.</i>
Purification:	Affinity Purified
Conjugation:	Unconjugated
Storage:	Store at -20°C as received.
Stability:	Stable for 12 months from date of receipt.
Predicted Protein Size:	58 kDa
Gene Name:	pyruvate kinase, liver and RBC
Database Link:	NP_870986 Entrez Gene 5313 Human P30613



[View online »](#)

Background: PKLR is a pyruvate kinase that catalyzes the production of phosphoenolpyruvate from pyruvate and ATP. Defects in this enzyme, due to gene mutations or genetic variations, are the common cause of chronic hereditary nonspherocytic hemolytic anemia (CNSHA or HNSHA). The protein encoded by this gene is a pyruvate kinase that catalyzes the production of phosphoenolpyruvate from pyruvate and ATP. Defects in this enzyme, due to gene mutations or genetic variations, are the common cause of chronic hereditary nonspherocytic hemolytic anemia (CNSHA or HNSHA). Alternatively spliced transcript variants encoding distinct isoforms have been described.

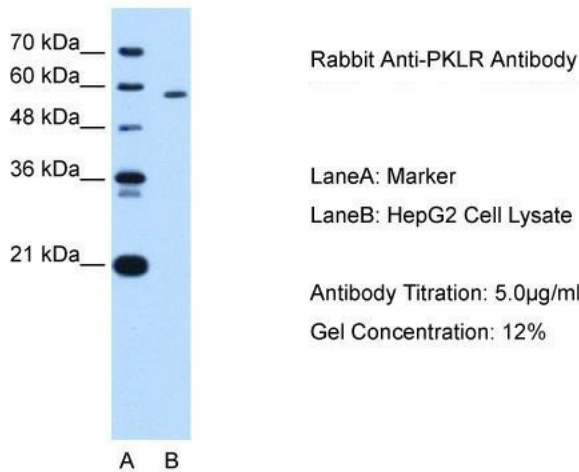
Synonyms: PK1; PKL; PKR; PKRL; RPK

Note: Immunogen Sequence Homology: Dog: 100%; Pig: 100%; Rat: 100%; Human: 100%; Mouse: 100%; Bovine: 100%; Rabbit: 100%; Horse: 93%; Zebrafish: 93%; Guinea pig: 86%

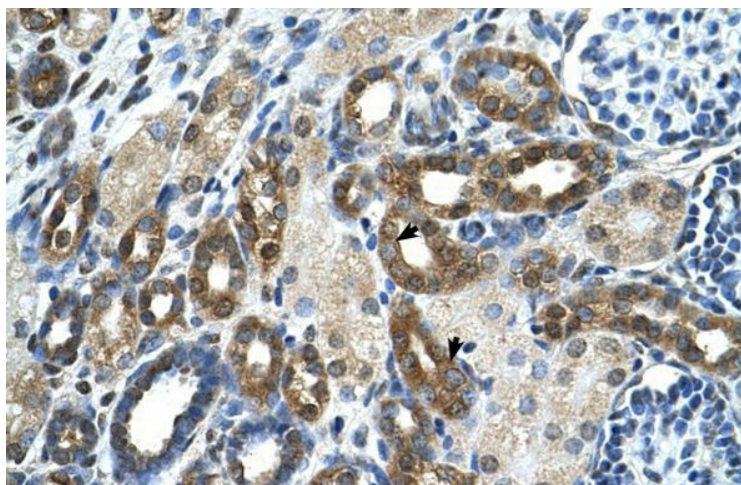
Protein Families: Druggable Genome

Protein Pathways: Glycolysis / Gluconeogenesis, Insulin signaling pathway, Maturity onset diabetes of the young, Metabolic pathways, Purine metabolism, Pyruvate metabolism, Type II diabetes mellitus

Product images:



PKLR antibody - N-terminal region validated by WB using HepG2 cell lysate at 1.0 ug/ml. There is BioGPS gene expression data showing that PKLR is expressed in HepG2



Rabbit Anti-PKLR Antibody; Paraffin Embedded Tissue: Human Kidney; Cellular Data: Epithelial cells of renal tubule; Antibody Concentration: 4.0-8.0 ug/ml; Magnification: 400X