

## Product datasheet for **TA346169**

### LCAT Rabbit Polyclonal Antibody

#### Product data:

Product Type:	Primary Antibodies
Applications:	WB
Recommended Dilution:	WB
Reactivity:	Human
Host:	Rabbit
Isotype:	IgG
Clonality:	Polyclonal
Immunogen:	The immunogen for anti-LCAT antibody: synthetic peptide directed towards the C terminal of human LCAT. Synthetic peptide located within the following region: GVLYEDGDDTVATRSTELCGLWQGRQPQPVHLLPLHGIQHLNMVFSNLTL
Formulation:	Liquid. Purified antibody supplied in 1x PBS buffer with 0.09% (w/v) sodium azide and 2% sucrose. <i>Note that this product is shipped as lyophilized powder to China customers.</i>
Purification:	Affinity Purified
Conjugation:	Unconjugated
Storage:	Store at -20°C as received.
Stability:	Stable for 12 months from date of receipt.
Predicted Protein Size:	47 kDa
Gene Name:	lecithin-cholesterol acyltransferase
Database Link:	<a href="#">NP_000220</a> <a href="#">Entrez Gene 3931 Human</a> <a href="#">P04180</a>



[View online »](#)

**Background:**

LCAT is an extracellular cholesterol esterifying enzyme, lecithin-cholesterol acyltransferase. The esterification of cholesterol is required for cholesterol transport. Mutations in its gene have been found to cause fish-eye disease as well as LCAT deficiency. This gene encodes the extracellular cholesterol esterifying enzyme, lecithin-cholesterol acyltransferase. The esterification of cholesterol is required for cholesterol transport. Mutations in this gene have been found to cause fish-eye disease as well as LCAT deficiency. This gene encodes the extracellular cholesterol esterifying enzyme, lecithin-cholesterol acyltransferase. The esterification of cholesterol is required for cholesterol transport. Mutations in this gene have been found to cause fish-eye disease as well as LCAT deficiency. Publication Note: This RefSeq record includes a subset of the publications that are available for this gene. Please see the Entrez Gene record to access additional publications.

**Synonyms:**

lecithin-cholesterol acyltransferase

**Note:**

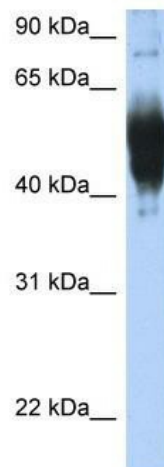
Immunogen Sequence Homology: Dog: 100%; Pig: 100%; Rat: 100%; Horse: 100%; Human: 100%; Mouse: 100%; Sheep: 100%; Bovine: 100%; Rabbit: 100%; Guinea pig: 100%; Zebrafish: 75%

**Protein Families:**

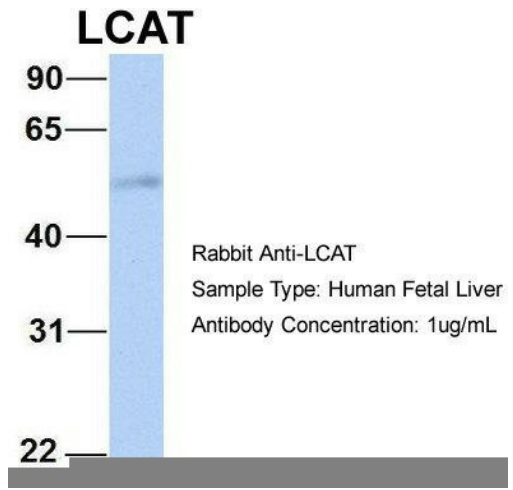
Druggable Genome, Transmembrane

**Protein Pathways:**

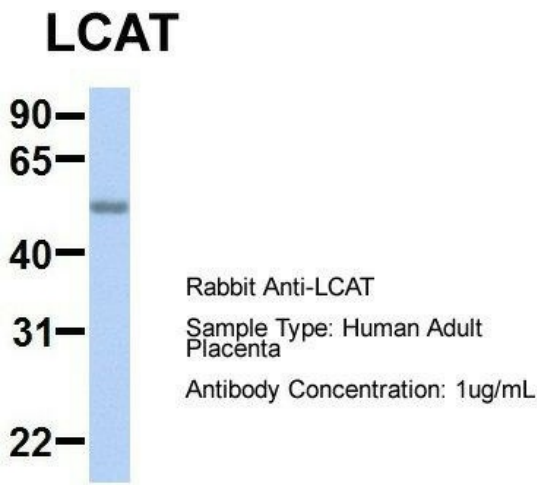
Glycerophospholipid metabolism

**Product images:**

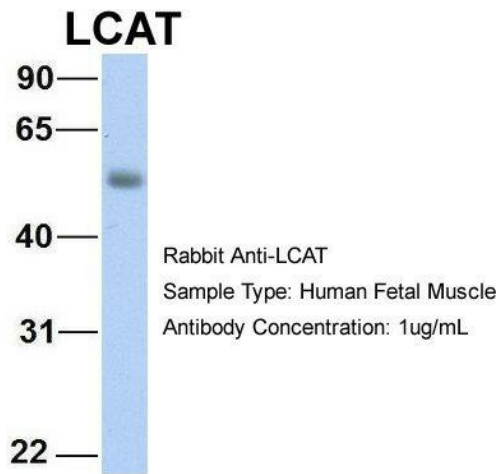
WB Suggested Anti-LCAT Antibody Titration: 0.2-1 ug/ml; Positive Control: Transfected 293T



2Hum. Fetal Liver; Host: Rabbit; Target Name: FAM46C; Sample Tissue: Human Fetal Liver; Antibody Dilution: 1.0 ug/ml



3Hum. Adult Placenta; Host: Rabbit; Target Name: SERPINA3; Sample Tissue: Human Adult Placenta; Antibody Dilution: 1.0 ug/ml



4Hum. Fetal Muscle; Host: Rabbit; Target Name: NOP56; Sample Tissue: Human Fetal Muscle; Antibody Dilution: 1.0 ug/ml