

Product datasheet for **TA346168**

LCAT Rabbit Polyclonal Antibody

Product data:

Product Type:	Primary Antibodies
Applications:	WB
Recommended Dilution:	WB
Reactivity:	Human
Host:	Rabbit
Isotype:	IgG
Clonality:	Polyclonal
Immunogen:	The immunogen for anti-LCAT antibody: synthetic peptide directed towards the N terminal of human LCAT. Synthetic peptide located within the following region: MGPPGSPWQWVTLGLLLPPAAPFWLLNVLFPPHTTPKAELSNHTRPVI
Formulation:	Liquid. Purified antibody supplied in 1x PBS buffer with 0.09% (w/v) sodium azide and 2% sucrose. <i>Note that this product is shipped as lyophilized powder to China customers.</i>
Purification:	Affinity Purified
Conjugation:	Unconjugated
Storage:	Store at -20°C as received.
Stability:	Stable for 12 months from date of receipt.
Predicted Protein Size:	48 kDa
Gene Name:	lecithin-cholesterol acyltransferase
Database Link:	NP_000220 Entrez Gene 3931 Human P04180
Background:	LCAT is an extracellular cholesterol esterifying enzyme, lecithin-cholesterol acyltransferase. The esterification of cholesterol is required for cholesterol transport. Mutations in its gene have been found to cause fish-eye disease as well as LCAT deficiency. This gene encodes the extracellular cholesterol esterifying enzyme, lecithin-cholesterol acyltransferase. The esterification of cholesterol is required for cholesterol transport. Mutations in this gene have been found to cause fish-eye disease as well as LCAT deficiency.



[View online »](#)

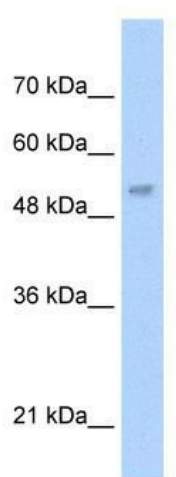
Synonyms: lecithin-cholesterol acyltransferase

Note: Immunogen Sequence Homology: Dog: 100%; Pig: 100%; Rat: 100%; Horse: 100%; Human: 100%; Mouse: 100%; Sheep: 100%; Bovine: 100%; Rabbit: 100%; Guinea pig: 100%

Protein Families: Druggable Genome, Transmembrane

Protein Pathways: Glycerophospholipid metabolism

Product images:



WB Suggested Anti-LCAT Antibody Titration: 5.0 ug/ml; Positive Control: HepG2 cell lysate LCAT is supported by BioGPS gene expression data to be expressed in HepG2