

Product datasheet for **TA346167**

Laminin 5 (LAMB3) Rabbit Polyclonal Antibody

Product data:

Product Type:	Primary Antibodies
Applications:	WB
Recommended Dilution:	WB
Reactivity:	Human
Host:	Rabbit
Isotype:	IgG
Clonality:	Polyclonal
Immunogen:	The immunogen for anti-LAMB3 antibody: synthetic peptide directed towards the middle region of human LAMB3. Synthetic peptide located within the following region: ERIKQKYAELKDRLGQSSMLGEGGARIQSVKTEAEELFGETMEMMDRMKD
Formulation:	Liquid. Purified antibody supplied in 1x PBS buffer with 0.09% (w/v) sodium azide and 2% sucrose. <i>Note that this product is shipped as lyophilized powder to China customers.</i>
Purification:	Affinity Purified
Conjugation:	Unconjugated
Storage:	Store at -20°C as received.
Stability:	Stable for 12 months from date of receipt.
Predicted Protein Size:	128 kDa
Gene Name:	laminin subunit beta 3
Database Link:	NP_000219 Entrez Gene 3914 Human Q13751
Background:	The product encoded by this gene is a laminin that belongs to a family of basement membrane proteins. This protein is a beta subunit laminin, which together with an alpha and a gamma subunit, forms laminin-5. Mutations in this gene cause epidermolysis bullosa junctional Herlitz type, and generalized atrophic benign epidermolysis bullosa, diseases that are characterized by blistering of the skin. Multiple alternatively spliced transcript variants that encode the same protein have been found for this gene. [provided by RefSeq, Jul 2008]



[View online »](#)

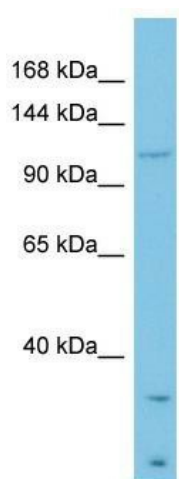
Synonyms: AI1A; BM600-125KDA; LAM5; LAMNB1

Note: Immunogen Sequence Homology: Human: 100%; Dog: 86%; Pig: 86%; Bovine: 86%; Guinea pig: 86%; Rabbit: 79%

Protein Families: Druggable Genome, Secreted Protein

Protein Pathways: ECM-receptor interaction, Focal adhesion, Pathways in cancer, Small cell lung cancer

Product images:



WB Suggested Anti-LAMB3 Antibody Titration:
0.2-1 ug/ml; ELISA Titer: 1: 62500; Positive
Control: COLO205 cell lysate