

## Product datasheet for **TA346163**

### FECH Rabbit Polyclonal Antibody

#### Product data:

Product Type:	Primary Antibodies
Applications:	WB
Recommended Dilution:	WB
Reactivity:	Human, Mouse
Host:	Rabbit
Isotype:	IgG
Clonality:	Polyclonal
Immunogen:	The immunogen for anti-FECH antibody: synthetic peptide directed towards the middle region of human FECH. Synthetic peptide located within the following region: KRSEVVILFSAHSLPMSVVRGDPYPQEVSATVQKVMERLEYCNPYRLVW
Formulation:	Liquid. Purified antibody supplied in 1x PBS buffer with 0.09% (w/v) sodium azide and 2% sucrose. <i>Note that this product is shipped as lyophilized powder to China customers.</i>
Purification:	Affinity Purified
Conjugation:	Unconjugated
Storage:	Store at -20°C as received.
Stability:	Stable for 12 months from date of receipt.
Predicted Protein Size:	42 kDa
Gene Name:	ferrochelatase
Database Link:	<a href="#">NP_000131</a> <a href="#">Entrez Gene 14151 Mouse</a> <a href="#">Entrez Gene 2235 Human</a> <a href="#">P22830</a>



[View online »](#)

**Background:** FECH is localized to the mitochondrion, where it catalyzes the insertion of the ferrous form of iron into protoporphyrin IX in the heme synthesis pathway. Mutations in this gene are associated with erythropoietic protoporphyria. Two transcript variants encoding different isoforms have been found for this gene. The protein encoded by this gene is localized to the mitochondrion, where it catalyzes the insertion of the ferrous form of iron into protoporphyrin IX in the heme synthesis pathway. Mutations in this gene are associated with erythropoietic protoporphyria. Two transcript variants encoding different isoforms have been found for this gene.

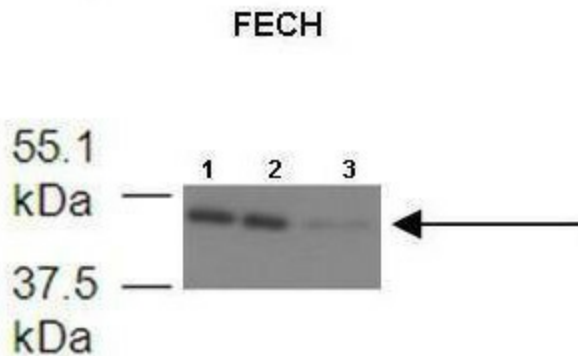
**Synonyms:** EPP; FCE

**Note:** Immunogen Sequence Homology: Human: 100%; Dog: 93%; Pig: 93%; Rat: 93%; Horse: 93%; Mouse: 93%; Bovine: 93%; Rabbit: 93%; Zebrafish: 93%; Guinea pig: 93%; Yeast: 86%

**Protein Families:** Druggable Genome

**Protein Pathways:** Metabolic pathways, Porphyrin and chlorophyll metabolism

**Product images:**



Lanes: 1. 6 ug mouse brain mitochondria extract  
 2. 6 ug mouse brain mitochondria extract  
 3. 6 ug mouse brain mitochondria extract; Primary Antibody Dilution: 1: 500; Secondary Antibody: Anti-rabbit HRP; Secondary Antibody Dilution: 1: 3000; Gene Name: FECH; Submitted by: Dr. Hao Zhu, University of Kansas Medical Center;



WB Suggested Anti-FECH Antibody Titration: 0.2-1 ug/ml; ELISA Titer: 1: 312500; Positive Control: MCF7 cell lysate  
 FECH is supported by BioGPS gene expression data to be expressed in MCF7