

Product datasheet for **TA346161**

Fumarylacetoacetate hydrolase (FAH) Rabbit Polyclonal Antibody

Product data:

Product Type:	Primary Antibodies
Applications:	IHC, WB
Recommended Dilution:	WB, IHC
Reactivity:	Human, Mouse
Host:	Rabbit
Isotype:	IgG
Clonality:	Polyclonal
Immunogen:	The immunogen for anti-FAH antibody: synthetic peptide directed towards the C terminal of human FAH. Synthetic peptide located within the following region: AATICKSNFKYMYWTMLQQLTHHSVNGCNLRPGDLLASGTISGPEPENFG
Formulation:	Liquid. Purified antibody supplied in 1x PBS buffer with 0.09% (w/v) sodium azide and 2% sucrose. <i>Note that this product is shipped as lyophilized powder to China customers.</i>
Purification:	Affinity Purified
Conjugation:	Unconjugated
Storage:	Store at -20°C as received.
Stability:	Stable for 12 months from date of receipt.
Predicted Protein Size:	46 kDa
Gene Name:	fumarylacetoacetate hydrolase (fumarylacetoacetase)
Database Link:	NP_000128 Entrez Gene 14085 Mouse Entrez Gene 2184 Human P16930
Background:	FAH is the last enzyme in the tyrosine catabolism pathway. FAH deficiency is associated with Type 1 hereditary tyrosinemia. This gene encodes the last enzyme in the tyrosine catabolism pathway. FAH deficiency is associated with Type 1 hereditary tyrosinemia (HT).
Synonyms:	FLJ51912
Note:	Immunogen Sequence Homology: Dog: 100%; Rat: 100%; Horse: 100%; Human: 100%; Mouse: 100%; Pig: 93%; Bovine: 93%; Rabbit: 93%; Zebrafish: 93%; Guinea pig: 93%

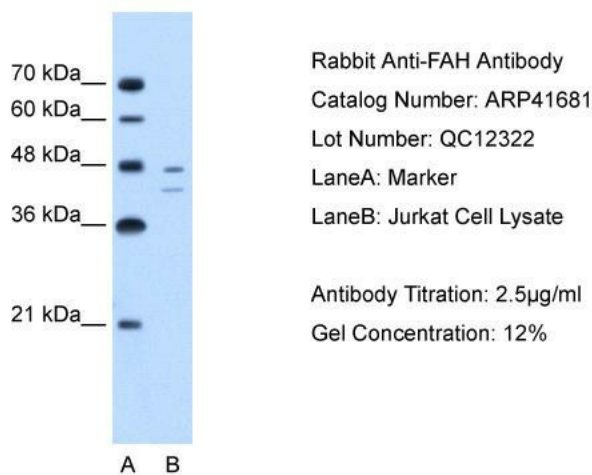


[View online »](#)

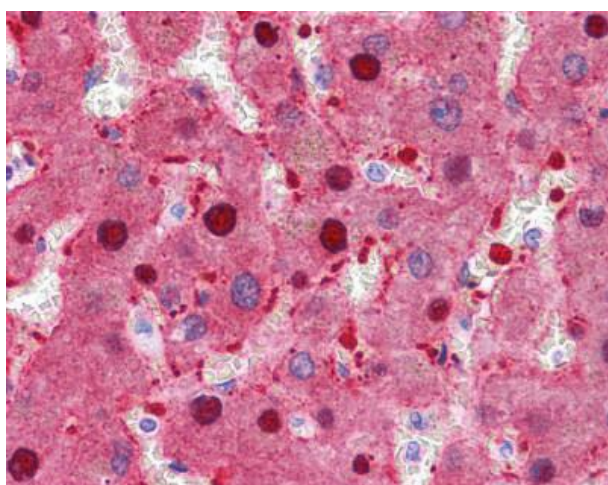
Protein Families: Druggable Genome

Protein Pathways: Metabolic pathways, Tyrosine metabolism

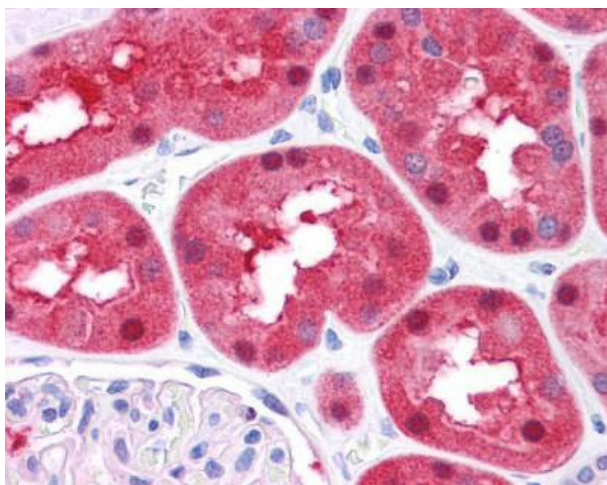
Product images:



FAH antibody - C-terminal region validated by WB using Jurkat cell lysate at 2.5 ug/ml.

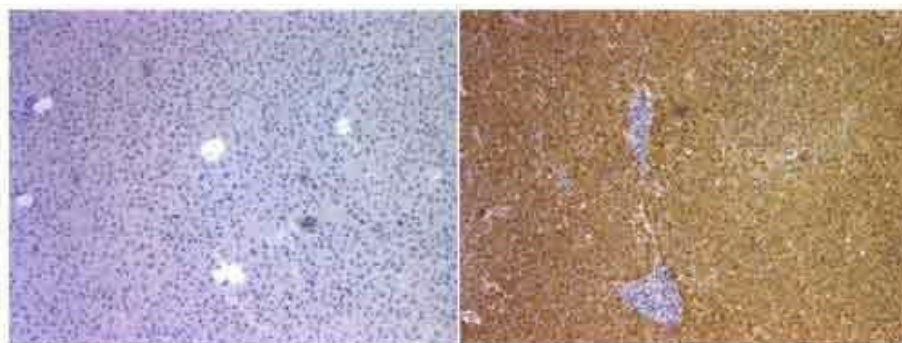


Immunohistochemistry with human liver, mouse KO tissue

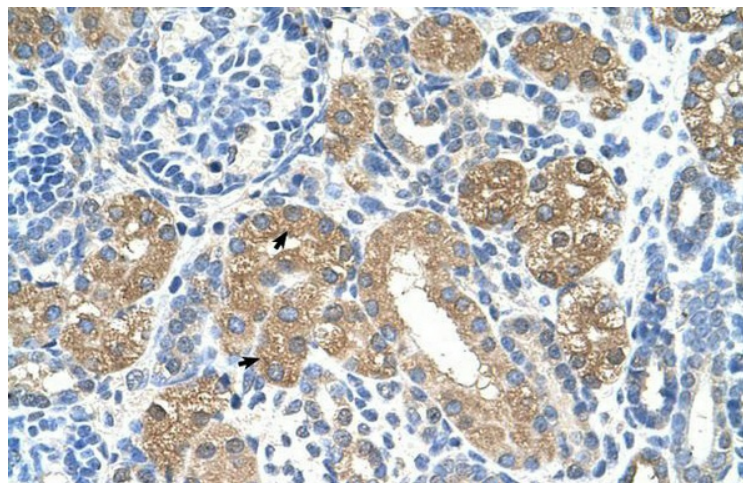


Immunohistochemistry with human liver, mouse KO tissue

FAH



Sample Type: Human Liver and Mouse FAH KO liver
Primary Dilution: 1: 400



Rabbit Anti-FAH Antibody; Paraffin Embedded Tissue: Human Kidney; Cellular Data: Epithelial cells of renal tubule; Antibody Concentration: 4.0-8.0 ug/ml; Magnification: 400X