

Product datasheet for **TA346155**

C2 Rabbit Polyclonal Antibody

Product data:

Product Type:	Primary Antibodies
Applications:	WB
Recommended Dilution:	WB
Reactivity:	Human
Host:	Rabbit
Isotype:	IgG
Clonality:	Polyclonal
Immunogen:	The immunogen for anti-C2 antibody: synthetic peptide directed towards the N terminal of human C2. Synthetic peptide located within the following region: EPICRQPYSYDFPEDVAPALGTSFSHMLGATNPTQKTKESLGRKIQIRS
Formulation:	Liquid. Purified antibody supplied in 1x PBS buffer with 0.09% (w/v) sodium azide and 2% sucrose. <i>Note that this product is shipped as lyophilized powder to China customers.</i>
Purification:	Affinity Purified
Conjugation:	Unconjugated
Storage:	Store at -20°C as received.
Stability:	Stable for 12 months from date of receipt.
Predicted Protein Size:	81 kDa
Gene Name:	complement component 2
Database Link:	NP_000054 Entrez Gene 717 Human P06681



[View online »](#)

Background: Component C2 is part of the classical pathway of complement system. Activated C1 cleaves C2 into C2a and C2b. C2a leads to activation of C3. Deficiency of C2 has been reported to associated with certain autoimmune diseases. Component C2 is part of the classical pathway of complement system. Activated C1 cleaves C2 into C2a and C2b. C2a leads to activation of C3. Deficiency of C2 has been reported to associated with certain autoimmune diseases. Component C2 is part of the classical pathway of complement system. Activated C1 cleaves C2 into C2a and C2b. C2a leads to activation of C3. Deficiency of C2 has been reported to associated with certain autoimmune diseases. Publication Note: This RefSeq record includes a subset of the publications that are available for this gene. Please see the Entrez Gene record to access additional publications.

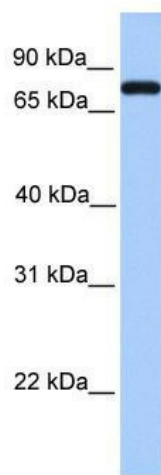
Synonyms: ARMD14; CO2

Note: Immunogen Sequence Homology: Pig: 100%; Rat: 100%; Horse: 100%; Human: 100%; Mouse: 100%; Bovine: 100%; Rabbit: 100%; Dog: 93%; Guinea pig: 93%

Protein Families: Druggable Genome, Protease, Secreted Protein

Protein Pathways: Complement and coagulation cascades, Systemic lupus erythematosus

Product images:



WB Suggested Anti-C2 Antibody Titration: 0.2-1 ug/ml; Positive Control: Human heart