

## Product datasheet for **TA346153**

### Argininosuccinate Lyase (ASL) Rabbit Polyclonal Antibody

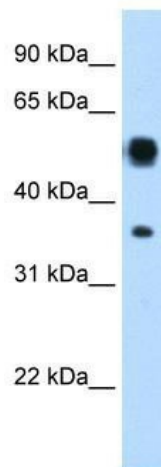
#### Product data:

Product Type:	Primary Antibodies
Applications:	WB
Recommended Dilution:	WB
Reactivity:	Human
Host:	Rabbit
Isotype:	IgG
Clonality:	Polyclonal
Immunogen:	The immunogen for anti-ASL antibody: synthetic peptide directed towards the N terminal of human ASL. Synthetic peptide located within the following region: GATAGKLHTGRSRNDQVVDLRLWMRQTCSTLSGLLWELIRTMVDRAEAE
Formulation:	Liquid. Purified antibody supplied in 1x PBS buffer with 0.09% (w/v) sodium azide and 2% sucrose. <i>Note that this product is shipped as lyophilized powder to China customers.</i>
Purification:	Affinity Purified
Conjugation:	Unconjugated
Storage:	Store at -20°C as received.
Stability:	Stable for 12 months from date of receipt.
Predicted Protein Size:	52 kDa
Gene Name:	argininosuccinate lyase
Database Link:	<a href="#">NP_000039</a> <a href="#">Entrez Gene 435 Human</a> <a href="#">P04424</a>



[View online »](#)

<b>Background:</b>	ASL is a member of the lyase 1 family. The protein forms a cytosolic homotetramer and primarily catalyzes the reversible hydrolytic cleavage of argininosuccinate into arginine and fumarate, an essential step in the liver in detoxifying ammonia via the urea cycle. Mutations in its gene result in the autosomal recessive disorder argininosuccinic aciduria, or argininosuccinic acid lyase deficiency. This gene encodes a member of the lyase 1 family. The encoded protein forms a cytosolic homotetramer and primarily catalyzes the reversible hydrolytic cleavage of argininosuccinate into arginine and fumarate, an essential step in the liver in detoxifying ammonia via the urea cycle. Mutations in this gene result in the autosomal recessive disorder argininosuccinic aciduria, or argininosuccinic acid lyase deficiency. A nontranscribed pseudogene is also located on the long arm of chromosome 22. Alternatively spliced transcript variants encoding different isoforms have been described.
<b>Synonyms:</b>	ASAL
<b>Note:</b>	Immunogen Sequence Homology: Dog: 100%; Pig: 100%; Rat: 100%; Goat: 100%; Horse: 100%; Human: 100%; Mouse: 100%; Yeast: 100%; Bovine: 100%; Rabbit: 100%; Zebrafish: 100%; Guinea pig: 100%
<b>Protein Pathways:</b>	Alanine, aspartate and glutamate metabolism, Arginine and proline metabolism, Metabolic pathways

**Product images:**

WB Suggested Anti-ASL Antibody Titration: 0.2-1 ug/ml; Positive Control: Transfected 293T