

Product datasheet for **TA346152**

ARSL Rabbit Polyclonal Antibody

Product data:

Product Type:	Primary Antibodies
Applications:	WB
Recommended Dilution:	WB
Reactivity:	Human
Host:	Rabbit
Isotype:	IgG
Clonality:	Polyclonal
Immunogen:	The immunogen for anti-ARSE antibody: synthetic peptide directed towards the middle region of human ARSE. Synthetic peptide located within the following region: KVVHHDPELLFDLSRDPSETHILTPASEPVFYQVMERVQQAVWEHQRTLS
Formulation:	Liquid. Purified antibody supplied in 1x PBS buffer with 0.09% (w/v) sodium azide and 2% sucrose.
Purification:	Affinity Purified
Conjugation:	Unconjugated
Storage:	Store at -20°C as received.
Stability:	Stable for 12 months from date of receipt.
Predicted Protein Size:	62 kDa
Gene Name:	arylsulfatase E (chondrodysplasia punctata 1)
Database Link:	NP_000038 Entrez Gene 415 Human P51690



[View online »](#)

Background:

Arylsulfatase E is a member of the sulfatase family. It is glycosylated posttranslationally and localized to the golgi apparatus. Sulfatases are essential for the correct composition of bone and cartilage matrix. X-linked chondrodysplasia punctata, a disease characterized by abnormalities in cartilage and bone development, has been linked to mutations in this gene. Arylsulfatase E is a member of the sulfatase family. It is glycosylated posttranslationally and localized to the golgi apparatus. Sulfatases are essential for the correct composition of bone and cartilage matrix. X-linked chondrodysplasia punctata, a disease characterized by abnormalities in cartilage and bone development, has been linked to mutations in this gene.

PRIMARYREFSEQ_SPAN PRIMARY_IDENTIFIER PRIMARY_SPAN COMP 1-170 AC005295.1 87561-87730 c 171-744 AK223183.1 1-574 745-2036 AK223199.1 542-1833 2037-2220 AW779826.1 1-184 c

Synonyms:

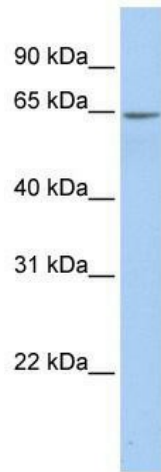
ASE; CDPX; CDPX1; CDPXR

Note:

Immunogen Sequence Homology: Human: 100%

Protein Families:

Druggable Genome, Transmembrane

Product images:

WB Suggested Anti-ARSE Antibody Titration: 0.2-1 ug/ml; ELISA Titer: 1: 62500; Positive Control: Human Placenta