

Product datasheet for **TA346150**

ALAS2 Rabbit Polyclonal Antibody

Product data:

Product Type:	Primary Antibodies
Applications:	WB
Recommended Dilution:	WB
Reactivity:	Human
Host:	Rabbit
Isotype:	IgG
Clonality:	Polyclonal
Immunogen:	The immunogen for anti-ALAS2 antibody: synthetic peptide directed towards the C terminal of human ALAS2. Synthetic peptide located within the following region: PTVPRGEELLRLAPSPHHSPQMMEFVEKLLLAWTAVGLPLQDVSVAACN
Formulation:	Liquid. Purified antibody supplied in 1x PBS buffer with 0.09% (w/v) sodium azide and 2% sucrose. <i>Note that this product is shipped as lyophilized powder to China customers.</i>
Purification:	Affinity Purified
Conjugation:	Unconjugated
Storage:	Store at -20°C as received.
Stability:	Stable for 12 months from date of receipt.
Predicted Protein Size:	60 kDa
Gene Name:	5'-aminolevulinate synthase 2
Database Link:	NP_001033056 Entrez Gene 212 Human P22557



[View online »](#)

Background:

ALAS2 specifies an erythroid-specific mitochondrially located enzyme. The protein catalyzes the first step in the heme biosynthetic pathway. Defects in its gene cause X-linked pyridoxine-responsive sideroblastic anemia. Alternatively spliced transcript variants encoding different isoforms have been identified. The product of this gene specifies an erythroid-specific mitochondrially located enzyme. The encoded protein catalyzes the first step in the heme biosynthetic pathway. Defects in this gene cause X-linked pyridoxine-responsive sideroblastic anemia. Alternatively spliced transcript variants encoding different isoforms have been identified.

Synonyms:

ALAS-E; ALASE; ANH1; ASB; SIDBA1; XLDPP; XLEPP; XLSA

Note:

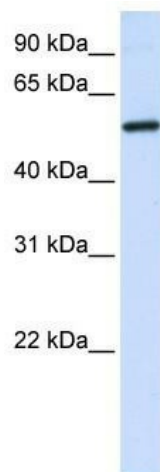
Immunogen Sequence Homology: Dog: 100%; Pig: 100%; Rat: 100%; Horse: 100%; Human: 100%; Mouse: 100%; Bovine: 100%; Rabbit: 100%; Guinea pig: 100%; Zebrafish: 85%; Goat: 79%; Sheep: 79%

Protein Families:

Druggable Genome

Protein Pathways:

Glycine, serine and threonine metabolism, Metabolic pathways, Porphyrin and chlorophyll metabolism

Product images:

WB Suggested Anti-ALAS2 Antibody Titration: 0.2-1 ug/ml; ELISA Titer: 1: 62500; Positive Control: Transfected 293T