

Product datasheet for **TA346144**

RAGE (AGER) Rabbit Polyclonal Antibody

Product data:

Product Type:	Primary Antibodies
Applications:	IHC, WB
Recommended Dilution:	WB, IHC
Reactivity:	Human
Host:	Rabbit
Isotype:	IgG
Clonality:	Polyclonal
Immunogen:	The immunogen for anti-AGER antibody: synthetic peptide directed towards the C terminal of human AGER. Synthetic peptide located within the following region: PSPQIHWMKDVS DL ERGAGRRGGANCR LC GRIRAGNSSPGPGDPGRPG
Formulation:	Liquid. Purified antibody supplied in 1x PBS buffer with 0.09% (w/v) sodium azide and 2% sucrose. <i>Note that this product is shipped as lyophilized powder to China customers.</i>
Purification:	Affinity Purified
Conjugation:	Unconjugated
Storage:	Store at -20°C as received.
Stability:	Stable for 12 months from date of receipt.
Predicted Protein Size:	38 kDa
Gene Name:	advanced glycosylation end product-specific receptor
Database Link:	NP_751947 Entrez Gene 177 Human Q15109



[View online »](#)

Background:

AGER mediates interactions of advanced glycosylation end products (AGE). These are nonenzymatically glycosylated proteins which accumulate in vascular tissue in aging and at an accelerated rate in diabetes. It is receptor for amyloid beta peptide. This gene encodes a member of the immunoglobulin superfamily of cell surface molecules. It is a receptor for various molecules, including the amyloidogenic form of serum amyloid A, amyloid-beta protein, members of the S100/calgranulin superfamily and advanced glycation end products. The gene lies within the major histocompatibility complex (MHC) class III region on chromosome 6. Alternative splicing results in two transcript variants encoding different isoforms. This gene encodes a member of the immunoglobulin superfamily of cell surface molecules. It is a receptor for various molecules, including the amyloidogenic form of serum amyloid A, amyloid-beta protein, members of the S100/calgranulin superfamily and advanced glycation end products. The gene lies within the major histocompatibility complex (MHC) class III region on chromosome 6. Alternative splicing results in two transcript variants encoding different isoforms.

Synonyms:

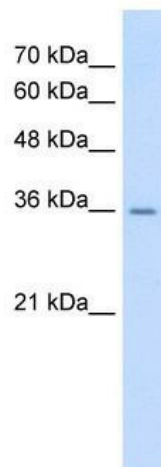
RAGE

Note:

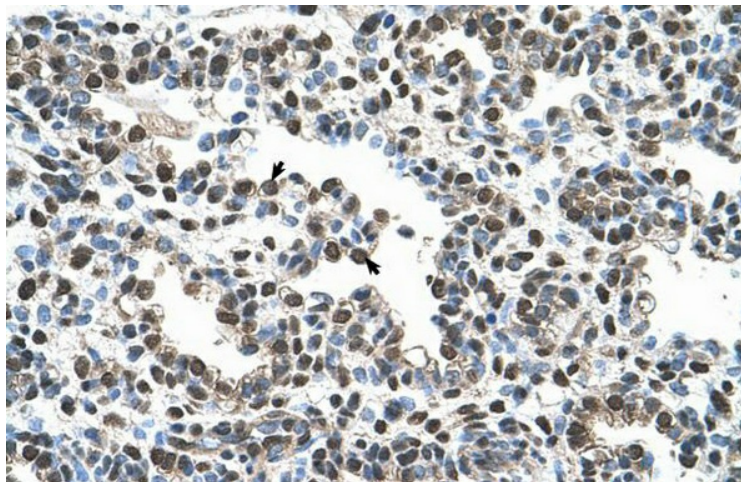
Immunogen Sequence Homology: Human: 100%

Protein Families:

Druggable Genome, Secreted Protein, Transmembrane

Product images:

WB Suggested Anti-AGER Antibody Titration: 0.2-1 ug/ml; Positive Control: HepG2 cell lysate



Rabbit Anti-AGER Antibody; Paraffin Embedded Tissue: Human Lung; Cellular Data: Alveolar cells; Antibody Concentration: 4.0-8.0 ug/ml; Magnification: 400X