

Product datasheet for **TA346142**

GGTLC1 Rabbit Polyclonal Antibody

Product data:

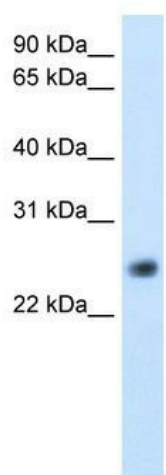
Product Type:	Primary Antibodies
Applications:	IHC, WB
Recommended Dilution:	WB, IHC
Reactivity:	Human
Host:	Rabbit
Isotype:	IgG
Clonality:	Polyclonal
Immunogen:	The immunogen for anti-GGTLC1 antibody: synthetic peptide directed towards the C terminal of human GGTLC1. Synthetic peptide located within the following region: DQEVTAALETRHHHTQITSTFIQVQAIQRMAGGWAAASDSRKGGEPAQY
Formulation:	Liquid. Purified antibody supplied in 1x PBS buffer with 0.09% (w/v) sodium azide and 2% sucrose.
Purification:	Affinity Purified
Conjugation:	Unconjugated
Storage:	Store at -20°C as received.
Stability:	Stable for 12 months from date of receipt.
Predicted Protein Size:	25 kDa
Gene Name:	gamma-glutamyltransferase light chain 1
Database Link:	NP_563577 Entrez Gene 92086 Human Q9BX51
Background:	Gamma-glutamyl transpeptidase is a membrane-bound protein that is important in the metabolism of glutathione. The protein is similar in sequence to several members of the gamma-glutamyl transpeptidase family. Gamma-glutamyl transpeptidase is a membrane-bound protein that is important in the metabolism of glutathione. The protein encoded by this gene is similar in sequence to several members of the gamma-glutamyl transpeptidase family. Three transcript variants encoding the same protein have been found for this gene.
Synonyms:	dj831C21.1; dj831C21.2; GGTLC1; GGTLC2; MGC50550



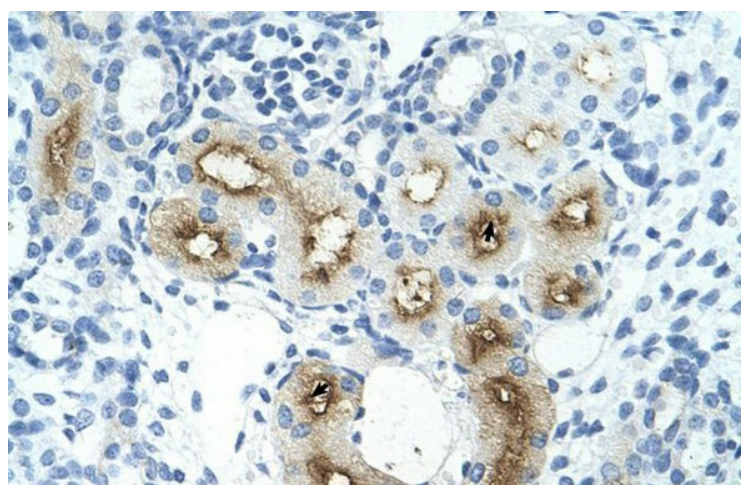
[View online »](#)

Note: Immunogen Sequence Homology: Dog: 100%; Pig: 100%; Rat: 100%; Horse: 100%; Human: 100%; Mouse: 100%; Bovine: 100%; Rabbit: 100%; Guinea pig: 100%

Product images:



WB Suggested Anti-GGTLC1 Antibody Titration:
5.0 ug/ml; Positive Control: Human kidney



Rabbit Anti-GGTLC1 Antibody; Paraffin Embedded
Tissue: Human Kidney; Cellular Data: Epithelial
cells of renal tubule; Antibody Concentration: 4.0-
8.0 ug/ml; Magnification: 400X