

Product datasheet for **TA346141**

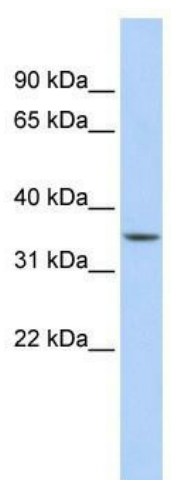
SARG (C1orf116) Rabbit Polyclonal Antibody

Product data:

Product Type:	Primary Antibodies
Applications:	WB
Recommended Dilution:	WB
Reactivity:	Human
Host:	Rabbit
Isotype:	IgG
Clonality:	Polyclonal
Immunogen:	The immunogen for anti-C1orf116 antibody: synthetic peptide directed towards the middle region of human C1orf116. Synthetic peptide located within the following region: SGLTLQESNTPGLRQMNFKSNTLERSGVGLSSYLSTEKDASPKTSTSLGK
Formulation:	Liquid. Purified antibody supplied in 1x PBS buffer with 0.09% (w/v) sodium azide and 2% sucrose.
Purification:	Affinity Purified
Conjugation:	Unconjugated
Storage:	Store at -20°C as received.
Stability:	Stable for 12 months from date of receipt.
Predicted Protein Size:	37 kDa
Gene Name:	chromosome 1 open reading frame 116
Database Link:	NP_001077393 Entrez Gene 79098 Human Q9BW04
Background:	C1orf116 belongs to the SARG family. It is a putative androgen-specific receptor. It is highly expressed in prostate.
Synonyms:	SARG
Note:	Immunogen Sequence Homology: Rat: 100%; Horse: 100%; Human: 100%; Mouse: 100%; Rabbit: 100%; Dog: 93%; Pig: 93%; Bovine: 93%; Guinea pig: 93%


[View online »](#)

Product images:



WB Suggested Anti-C1orf116 Antibody Titration:
0.2-1 ug/ml; ELISA Titer: 1: 312500; Positive
Control: Human Liver