

Product datasheet for **TA346140**

POPDC2 Rabbit Polyclonal Antibody

Product data:

Product Type:	Primary Antibodies
Applications:	WB
Recommended Dilution:	WB
Reactivity:	Human
Host:	Rabbit
Isotype:	IgG
Clonality:	Polyclonal
Immunogen:	The immunogen for anti-POPDC2 antibody: synthetic peptide directed towards the middle region of human POPDC2. Synthetic peptide located within the following region: SLHLLLTKERYISCLFSALLGYDISEKLYTLNDKLFKFGRLRFDIRLPSL
Formulation:	Liquid. Purified antibody supplied in 1x PBS buffer with 0.09% (w/v) sodium azide and 2% sucrose. <i>Note that this product is shipped as lyophilized powder to China customers.</i>
Purification:	Affinity Purified
Conjugation:	Unconjugated
Storage:	Store at -20°C as received.
Stability:	Stable for 12 months from date of receipt.
Predicted Protein Size:	40 kDa
Gene Name:	popeye domain containing 2
Database Link:	NP_071418 Entrez Gene 64091 Human Q9HBU9
Background:	POPDC2 is a member of the POP family of proteins which contain three putative transmembrane domains. This membrane associated protein is predominantly expressed in skeletal and cardiac muscle, and may have an important function in these tissues. This gene encodes a member of the POP family of proteins which contain three putative transmembrane domains. This membrane associated protein is predominantly expressed in skeletal and cardiac muscle, and may have an important function in these tissues.



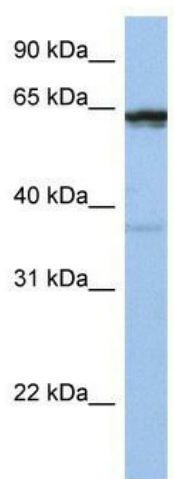
[View online »](#)

Synonyms: POP2

Note: Immunogen Sequence Homology: Rat: 100%; Human: 100%; Mouse: 100%; Rabbit: 100%; Pig: 93%; Horse: 93%; Bovine: 93%; Guinea pig: 93%; Zebrafish: 75%

Protein Families: Transmembrane

Product images:



WB Suggested Anti-POPDC2 Antibody Titration:
0.2-1 ug/ml; Positive Control: Jurkat cell lysate