

Product datasheet for **TA346137**

HEPC (HAMP) Rabbit Polyclonal Antibody

Product data:

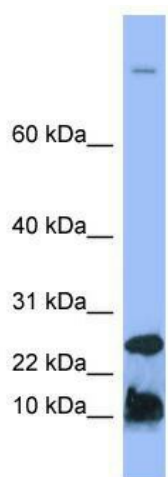
Product Type:	Primary Antibodies
Applications:	WB
Recommended Dilution:	WB
Reactivity:	Human
Host:	Rabbit
Isotype:	IgG
Clonality:	Polyclonal
Immunogen:	The immunogen for anti-HAMP antibody: synthetic peptide directed towards the N terminal of human HAMP. Synthetic peptide located within the following region: MALSSQIWAACL LLLLLL LASLTSGSVFPQQTGQLAELQPQDRAGARASWM
Formulation:	Liquid. Purified antibody supplied in 1x PBS buffer with 0.09% (w/v) sodium azide and 2% sucrose. <i>Note that this product is shipped as lyophilized powder to China customers.</i>
Purification:	Affinity Purified
Conjugation:	Unconjugated
Storage:	Store at -20°C as received.
Stability:	Stable for 12 months from date of receipt.
Predicted Protein Size:	9 kDa
Gene Name:	hepcidin antimicrobial peptide
Database Link:	NP_066998 Entrez Gene 57817 Human P81172
Background:	The product encoded by this gene is involved in the maintenance of iron homeostasis, and it is necessary for the regulation of iron storage in macrophages, and for intestinal iron absorption.
Synonyms:	HEPC; HFE2B; LEAP1; PLTR
Note:	Immunogen Sequence Homology: Human: 100%; Rat: 83%



[View online »](#)

Protein Families: Secreted Protein, Transmembrane

Product images:



WB Suggested Anti-HAMP Antibody Titration: 0.2-1 ug/ml; ELISA Titer: 1: 312500; Positive Control: Human Spleen