

## Product datasheet for **TA346135**

### ITLN1 Rabbit Polyclonal Antibody

#### Product data:

Product Type:	Primary Antibodies
Applications:	WB
Recommended Dilution:	WB
Reactivity:	Human
Host:	Rabbit
Isotype:	IgG
Clonality:	Polyclonal
Immunogen:	The immunogen for anti-ITLN1 antibody: synthetic peptide directed towards the middle region of human ITLN1. Synthetic peptide located within the following region: WTDNGPVIPWYDFGDAQKTASYSPYGQREFTAGFVQFRVFNNERAANA
Formulation:	Liquid. Purified antibody supplied in 1x PBS buffer with 0.09% (w/v) sodium azide and 2% sucrose. <i>Note that this product is shipped as lyophilized powder to China customers.</i>
Purification:	Affinity Purified
Conjugation:	Unconjugated
Storage:	Store at -20°C as received.
Stability:	Stable for 12 months from date of receipt.
Predicted Protein Size:	35 kDa
Gene Name:	intellectin 1
Database Link:	<a href="#">NP_060095</a> <a href="#">Entrez Gene 55600 Human</a> <a href="#">Q8WWA0</a>
Background:	ITLN1 has no effect on basal glucose uptake but enhances insulin-stimulated glucose uptake in adipocytes. ITLN1 increases AKT phosphorylation in the absence and presence of insulin. ITLN1 may play a role in the defense system against microorganisms. ITLN1 may specifically recognize carbohydrate chains of pathogens and bacterial components containing galactofuranosyl residues, in a calcium-dependent manner. ITLN1 may be involved in iron metabolism.



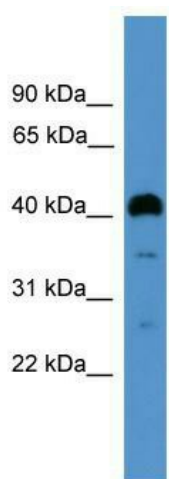
[View online »](#)

**Synonyms:** hIntL; HL-1; HL1; INTL; ITLN; LFR; omentin

**Note:** Immunogen Sequence Homology: Rat: 100%; Horse: 100%; Human: 100%; Mouse: 100%; Pig: 93%; Sheep: 93%; Bovine: 93%; Rabbit: 93%; Guinea pig: 93%

**Protein Families:** Druggable Genome, Secreted Protein

**Product images:**



WB Suggested Anti-ITLN1 Antibody Titration: 0.2-1 ug/ml; ELISA Titer: 1: 62500; Positive Control: Jurkat cell lysate