

Product datasheet for **TA346134**

NAT8B Rabbit Polyclonal Antibody

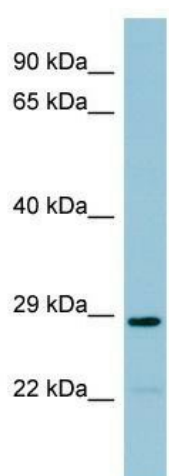
Product data:

Product Type:	Primary Antibodies
Applications:	WB
Recommended Dilution:	WB
Reactivity:	Human
Host:	Rabbit
Isotype:	IgG
Clonality:	Polyclonal
Immunogen:	The immunogen for anti-NAT8B antibody: synthetic peptide directed towards the middle region of human NAT8B. Synthetic peptide located within the following region: SCFWVGESEEKVVGTVGALPDDPTLREKRLQLFHLSVDNEHRGQGIKA
Formulation:	Liquid. Purified antibody supplied in 1x PBS buffer with 0.09% (w/v) sodium azide and 2% sucrose.
Purification:	Affinity Purified
Conjugation:	Unconjugated
Storage:	Store at -20°C as received.
Stability:	Stable for 12 months from date of receipt.
Predicted Protein Size:	25 kDa
Gene Name:	N-acetyltransferase 8B (putative, gene/pseudogene)
Database Link:	NP_057431 Entrez Gene 51471 Human Q9UHF3
Background:	The protein encoded by this gene is highly similar to the N-acetyltransferase 8 (NAT8) gene product, which is a kidney and liver protein with homology to bacterial acetyltransferases involved in drug resistance.
Synonyms:	CML2; Hcml2; NAT8BP
Note:	Immunogen Sequence Homology: Pig: 100%; Horse: 100%; Human: 100%; Bovine: 100%; Yeast: 83%; Rat: 79%; Mouse: 79%; Rabbit: 79%



[View online »](#)

Product images:



WB Suggested Anti-NAT8B Antibody Titration:
0.2-1 ug/ml; ELISA Titer: 1: 62500; Positive
Control: THP-1 cell lysate