

Product datasheet for **TA346133**

Apc7 (ANAPC7) Rabbit Polyclonal Antibody

Product data:

Product Type:	Primary Antibodies
Applications:	IHC, WB
Recommended Dilution:	WB, IHC
Reactivity:	Human
Host:	Rabbit
Isotype:	IgG
Clonality:	Polyclonal
Immunogen:	The immunogen for anti-ANAPC7 antibody: synthetic peptide directed towards the C terminal of human ANAPC7. Synthetic peptide located within the following region: ALSLDPNQKSLEGMQKMEKEESPTDATQEEDVDDMEGSGEEGDLEGSDS
Formulation:	Liquid. Purified antibody supplied in 1x PBS buffer with 0.09% (w/v) sodium azide and 2% sucrose. <i>Note that this product is shipped as lyophilized powder to China customers.</i>
Purification:	Affinity Purified
Conjugation:	Unconjugated
Storage:	Store at -20°C as received.
Stability:	Stable for 12 months from date of receipt.
Predicted Protein Size:	62 kDa
Gene Name:	anaphase promoting complex subunit 7
Database Link:	NP_057322 Entrez Gene 51434 Human Q9UJX3
Background:	The anaphase-promoting complex (APC) consists of at least 8 protein subunits, including APC5, CDC27 (APC3), CDC16 (APC6), and CDC23 (APC8).The anaphase-promoting complex (APC) consists of at least 8 protein subunits, including APC5, CDC27 (APC3; MIM 116946), CDC16 (APC6; MIM 603461), and CDC23 (APC8; MIM 603462). [supplied by OMIM]
Synonyms:	APC7



[View online »](#)

Note: Immunogen Sequence Homology: Dog: 100%; Pig: 100%; Rat: 100%; Horse: 100%; Human: 100%; Mouse: 100%; Rabbit: 100%; Guinea pig: 100%

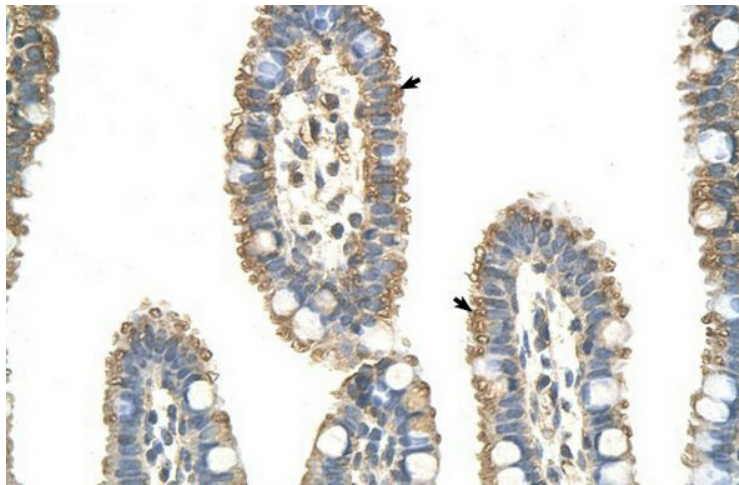
Protein Families: Druggable Genome

Protein Pathways: Cell cycle, Oocyte meiosis, Progesterone-mediated oocyte maturation, Ubiquitin mediated proteolysis

Product images:



WB Suggested Anti-ANAPC7 Antibody Titration: 0.2-1 ug/ml; Positive Control: Jurkat cell lysate



Rabbit Anti-ANAPC7 Antibody; Paraffin Embedded Tissue: Human Intestine; Cellular Data: Epithelial cells of intestinal villas; Antibody Concentration: 4.0-8.0 ug/ml; Magnification: 400X