

Product datasheet for **TA346129**

LAMP3 Rabbit Polyclonal Antibody

Product data:

Product Type:	Primary Antibodies
Applications:	WB
Recommended Dilution:	WB
Reactivity:	Human
Host:	Rabbit
Isotype:	IgG
Clonality:	Polyclonal
Immunogen:	The immunogen for anti-LAMP3 antibody: synthetic peptide directed towards the N terminal of human LAMP3. Synthetic peptide located within the following region: YSQPTAAATVQDIKKPVQQPAKQAPHQTLAARFMDGHITFQTAATVKIPT
Formulation:	Liquid. Purified antibody supplied in 1x PBS buffer with 0.09% (w/v) sodium azide and 2% sucrose. <i>Note that this product is shipped as lyophilized powder to China customers.</i>
Purification:	Affinity Purified
Conjugation:	Unconjugated
Storage:	Store at -20°C as received.
Stability:	Stable for 12 months from date of receipt.
Predicted Protein Size:	44 kDa
Gene Name:	lysosomal associated membrane protein 3
Database Link:	NP_055213 Entrez Gene 27074 Human Q9UQV4
Background:	LAMP3 might change the lysosome function after the transfer of peptide-MHC class II molecules to the surface of dendritic cells. LAMP3 overexpression is associated with an enhanced metastatic potential and may be a prognostic factor for cervical cancer.
Synonyms:	CD208; DC-LAMP; DC LAMP; DCLAMP; LAMP; LAMP-3; TSC403
Note:	Immunogen Sequence Homology: Human: 100%

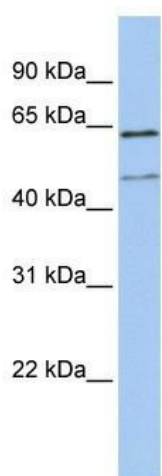


[View online »](#)

Protein Families: Transmembrane

Protein Pathways: Lysosome

Product images:



WB Suggested Anti-LAMP3 Antibody Titration:
0.2-1 ug/ml; ELISA Titer: 1: 312500; Positive
Control: MCF7 cell lysate