

## Product datasheet for **TA346125**

### SLC27A5 Rabbit Polyclonal Antibody

#### Product data:

Product Type:	Primary Antibodies
Applications:	WB
Recommended Dilution:	WB
Reactivity:	Human
Host:	Rabbit
Isotype:	IgG
Clonality:	Polyclonal
Immunogen:	The immunogen for anti-SLC27A5 antibody: synthetic peptide directed towards the middle region of human SLC27A5. Synthetic peptide located within the following region: KLYQHVRWLPAAYATPHFIRIQDAMEVTSTFKLMKTRLVREGFNVGIVVD
Formulation:	Liquid. Purified antibody supplied in 1x PBS buffer with 0.09% (w/v) sodium azide and 2% sucrose. <i>Note that this product is shipped as lyophilized powder to China customers.</i>
Purification:	Affinity Purified
Conjugation:	Unconjugated
Storage:	Store at -20°C as received.
Stability:	Stable for 12 months from date of receipt.
Predicted Protein Size:	75 kDa
Gene Name:	solute carrier family 27 member 5
Database Link:	<a href="#">NP_036386</a> <a href="#">Entrez Gene 10998 Human</a> <a href="#">Q9Y2P5</a>
Background:	The protein encoded by this gene is an isozyme of very long-chain acyl-CoA synthetase (VLCS). It is capable of activating very long-chain fatty-acids containing 24- and 26-carbons.
Synonyms:	ACSB; ACSVL6; BACS; BAL; FACVL3; FATP-5; FATP5; VLACSR; VLCS-H2; VLCSH2
Note:	Immunogen Sequence Homology: Rat: 100%; Human: 100%; Mouse: 100%; Dog: 92%; Rabbit: 92%; Bovine: 86%; Horse: 85%; Pig: 77%; Zebrafish: 77%; Guinea pig: 77%

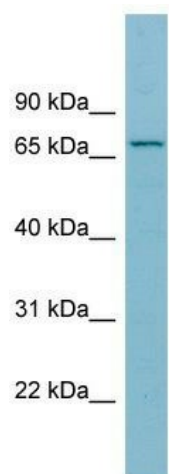


[View online »](#)

Protein Families: Transmembrane

Protein Pathways: Metabolic pathways, PPAR signaling pathway, Primary bile acid biosynthesis

### Product images:



WB Suggested Anti-SLC27A5 Antibody Titration:  
0.2-1 ug/ml; ELISA Titer: 1: 312500; Positive  
Control: OVCAR-3 cell lysate