

Product datasheet for **TA346123**

LDB3 Rabbit Polyclonal Antibody

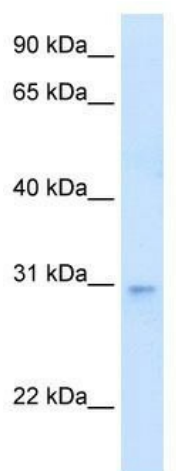
Product data:

Product Type:	Primary Antibodies
Applications:	WB
Recommended Dilution:	WB
Reactivity:	Human
Host:	Rabbit
Isotype:	IgG
Clonality:	Polyclonal
Immunogen:	The immunogen for anti-LDB3 antibody: synthetic peptide directed towards the N terminal of human LDB3. Synthetic peptide located within the following region: PVIPHQKDPALDTNGSLVAPSPSPEARASPGTGPTEL RPTFS PAFSRPS
Formulation:	Liquid. Purified antibody supplied in 1x PBS buffer with 0.09% (w/v) sodium azide and 2% sucrose. <i>Note that this product is shipped as lyophilized powder to China customers.</i>
Purification:	Affinity Purified
Conjugation:	Unconjugated
Storage:	Store at -20°C as received.
Stability:	Stable for 12 months from date of receipt.
Predicted Protein Size:	36 kDa
Gene Name:	LIM domain binding 3
Database Link:	NP_001073584 Entrez Gene 11155 Human O75112
Background:	LDB3 may function as an adapter in striated muscle to couple protein kinase C-mediated signaling via its LIM domains to the cytoskeleton.
Synonyms:	CMD1C; CMPD3; CYPHER; LDB3Z1; LDB3Z4; LVNC3; MFM4; ORACLE; PDLIM6; ZASP
Note:	Immunogen Sequence Homology: Human: 100%; Mouse: 100%; Pig: 93%; Rat: 93%; Bovine: 93%; Guinea pig: 93%



[View online »](#)

Product images:



WB Suggested Anti-LDB3 Antibody Titration:
0.625 ug/ml; Positive Control: Human heart