

Product datasheet for **TA346119**

MARCO Rabbit Polyclonal Antibody

Product data:

Product Type:	Primary Antibodies
Applications:	WB
Recommended Dilution:	WB
Reactivity:	Human
Host:	Rabbit
Isotype:	IgG
Clonality:	Polyclonal
Immunogen:	The immunogen for anti-MARCO antibody: synthetic peptide directed towards the N terminal of human MARCO. Synthetic peptide located within the following region: QARLRVLEMYFLNDTLAAEDSPFSLLQSAHPGEHLAQQGASRLQVLQAQL
Formulation:	Liquid. Purified antibody supplied in 1x PBS buffer with 0.09% (w/v) sodium azide and 2% sucrose. <i>Note that this product is shipped as lyophilized powder to China customers.</i>
Purification:	Affinity Purified
Conjugation:	Unconjugated
Storage:	Store at -20°C as received.
Stability:	Stable for 12 months from date of receipt.
Predicted Protein Size:	53 kDa
Gene Name:	macrophage receptor with collagenous structure
Database Link:	NP_006761 Entrez Gene 8685 Human Q9UEW3



[View online »](#)

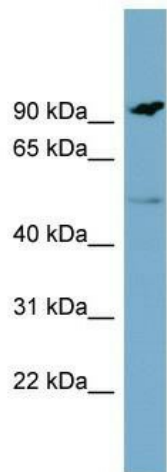
Background: The protein encoded by this gene is a member of the class A scavenger receptor family and is part of the innate antimicrobial immune system. The protein may bind both Gram-negative and Gram-positive bacteria via an extracellular, C-terminal, scavenger receptor cysteine-rich (SRCR) domain. In addition to short cytoplasmic and transmembrane domains, there is an extracellular spacer domain and a long, extracellular collagenous domain. The protein may form a trimeric molecule by the association of the collagenous domains of three identical polypeptide chains.

Synonyms: SCARA2

Note: Immunogen Sequence Homology: Human: 100%

Protein Families: Druggable Genome, Transmembrane

Product images:



WB Suggested Anti-MARCO Antibody Titration: 0.2-1 ug/ml; Positive Control: PANC1 cell lysate. MARCO is supported by BioGPS gene expression data to be expressed in PANC1