

Product datasheet for **TA346118**

RBP4 Rabbit Polyclonal Antibody

Product data:

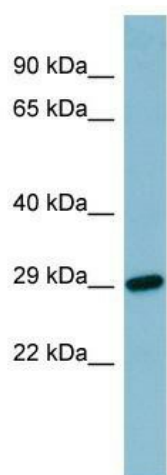
Product Type:	Primary Antibodies
Applications:	WB
Recommended Dilution:	WB
Reactivity:	Human
Host:	Rabbit
Isotype:	IgG
Clonality:	Polyclonal
Immunogen:	The immunogen for anti-RBP4 antibody: synthetic peptide directed towards the N terminal of human RBP4. Synthetic peptide located within the following region: MKWWWALLLLAALGSGRAERDCRVSSFRVKENFDKARFSGTWYAMAKKDP
Formulation:	Liquid. Purified antibody supplied in 1x PBS buffer with 0.09% (w/v) sodium azide and 2% sucrose. <i>Note that this product is shipped as lyophilized powder to China customers.</i>
Purification:	Affinity Purified
Conjugation:	Unconjugated
Storage:	Store at -20°C as received.
Stability:	Stable for 12 months from date of receipt.
Predicted Protein Size:	21 kDa
Gene Name:	retinol binding protein 4
Database Link:	NP_006735 Entrez Gene 5950 Human P02753
Background:	This protein belongs to the lipocalin family and is the specific carrier for retinol (vitamin A alcohol) in the blood. It delivers retinol from the liver stores to the peripheral tissues.
Synonyms:	MCOPCB10; RDCCAS
Note:	Immunogen Sequence Homology: Pig: 100%; Rat: 100%; Horse: 100%; Human: 100%; Mouse: 100%; Bovine: 93%; Rabbit: 93%; Yeast: 90%; Guinea pig: 86%; Dog: 85%



[View online »](#)

Protein Families: Druggable Genome, Secreted Protein

Product images:



WB Suggested Anti-RBP4 Antibody Titration: 0.2-1 ug/ml; ELISA Titer: 1: 312500; Positive Control: Human Stomach