

Product datasheet for **TA346117**

MASP2 Rabbit Polyclonal Antibody

Product data:

Product Type:	Primary Antibodies
Applications:	WB
Recommended Dilution:	WB
Reactivity:	Human, Mouse
Host:	Rabbit
Isotype:	IgG
Clonality:	Polyclonal
Immunogen:	The immunogen for anti-Masp2 antibody: synthetic peptide corresponding to a region of Mouse. Synthetic peptide located within the following region: YPQYPKLSSTYSIRLEDGFSVILDFVESFDVETHPEAQCPYDSLKIQT
Formulation:	Liquid. Purified antibody supplied in 1x PBS buffer with 0.09% (w/v) sodium azide and 2% sucrose. <i>Note that this product is shipped as lyophilized powder to China customers.</i>
Purification:	Affinity Purified
Conjugation:	Unconjugated
Storage:	Store at -20°C as received.
Stability:	Stable for 12 months from date of receipt.
Predicted Protein Size:	75 kDa
Gene Name:	mannan binding lectin serine peptidase 2
Database Link:	NP_006601 Entrez Gene 17175 Mouse Entrez Gene 10747 Human O00187
Background:	Masp2 is a serum protease that plays an important role in the activation of the complement system via mannose-binding lectin. After activation by auto-catalytic cleavage it cleaves C2 and C4, leading to their activation and to the formation of C3 convertase.
Synonyms:	MAP19; MASP-2; MASP1P1; sMAP
Note:	Immunogen Sequence Homology: Human: 100%; Mouse: 100%; Bovine: 100%; Pig: 93%; Rat: 92%; Guinea pig: 79%; Horse: 77%; Zebrafish: 77%

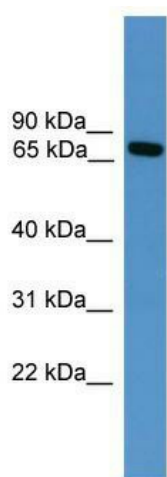


[View online »](#)

Protein Families: Druggable Genome, Protease, Secreted Protein

Protein Pathways: Complement and coagulation cascades

Product images:



WB Suggested Anti-Masp2 Antibody Titration: 0.2-1 ug/ml; ELISA Titer: 1: 62500; Positive Control: Mouse Heart