

Product datasheet for **TA346115**

ketohexokinase (KHK) Rabbit Polyclonal Antibody

Product data:

| | |
|-------------------------|--|
| Product Type: | Primary Antibodies |
| Applications: | WB |
| Recommended Dilution: | WB |
| Reactivity: | Human |
| Host: | Rabbit |
| Isotype: | IgG |
| Clonality: | Polyclonal |
| Immunogen: | The immunogen for anti-KHK antibody: synthetic peptide directed towards the N terminal of human KHK. Synthetic peptide located within the following region: FLVADFRRRGVDVSQVAWQSKGDT PSSCCIINNSNGNRTIVLHDTSLPDV |
| Formulation: | Liquid. Purified antibody supplied in 1x PBS buffer with 0.09% (w/v) sodium azide and 2% sucrose. <i>Note that this product is shipped as lyophilized powder to China customers.</i> |
| Purification: | Affinity Purified |
| Conjugation: | Unconjugated |
| Storage: | Store at -20°C as received. |
| Stability: | Stable for 12 months from date of receipt. |
| Predicted Protein Size: | 32 kDa |
| Gene Name: | ketohexokinase |
| Database Link: | NP_006479 Entrez Gene 3795 Human P50053 |
| Background: | KHK is a ketohexokinase that catalyzes conversion of fructose to fructose-1-phosphate. The product of this gene is the first enzyme with a specialized pathway that catabolizes dietary fructose. |
| Synonyms: | ketohexokinase; ketohexokinase (fructokinase) |
| Note: | Immunogen Sequence Homology: Human: 100%; Dog: 79%; Pig: 79%; Bovine: 79%; Guinea pig: 79% |

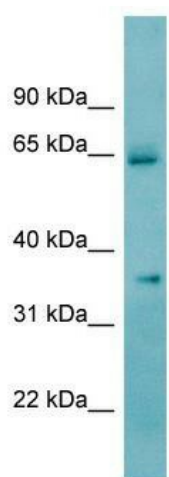


[View online »](#)

Protein Families: Druggable Genome

Protein Pathways: Fructose and mannose metabolism, Metabolic pathways

Product images:



WB Suggested Anti-KHK Antibody Titration: 0.2-1 ug/ml; ELISA Titer: 1: 312500; Positive Control: Human Small Intestine