

Product datasheet for **TA346114**

HMGC2 Rabbit Polyclonal Antibody

Product data:

Product Type:	Primary Antibodies
Applications:	WB
Recommended Dilution:	WB
Reactivity:	Human
Host:	Rabbit
Isotype:	IgG
Clonality:	Polyclonal
Immunogen:	The immunogen for anti-HMGC2 antibody: synthetic peptide directed towards the C terminal of human HMGC2. Synthetic peptide located within the following region: DLPKRLASRKCVSPEEFTEIMNQREQFYHKVNFSPPGDTNSLFPGTWYLE
Formulation:	Liquid. Purified antibody supplied in 1x PBS buffer with 0.09% (w/v) sodium azide and 2% sucrose. <i>Note that this product is shipped as lyophilized powder to China customers.</i>
Purification:	Affinity Purified
Conjugation:	Unconjugated
Storage:	Store at -20°C as received.
Stability:	Stable for 12 months from date of receipt.
Predicted Protein Size:	56 kDa
Gene Name:	3-hydroxy-3-methylglutaryl-CoA synthase 2
Database Link:	NP_005509 Entrez Gene 3158 Human P54868
Background:	This enzyme condenses acetyl-CoA with acetoacetyl-CoA to form HMG-CoA, which is the substrate for HMG-CoA reductase.
Synonyms:	3-hydroxy-3-methylglutaryl-Coenzyme A synthase 2 (mitochondrial); hydroxymethylglutaryl-CoA synthase 2; OTTHUMP00000013928
Note:	Immunogen Sequence Homology: Dog: 100%; Rat: 100%; Human: 100%; Mouse: 100%; Rabbit: 100%; Horse: 93%; Pig: 86%; Guinea pig: 86%; Goat: 79%; Bovine: 79%

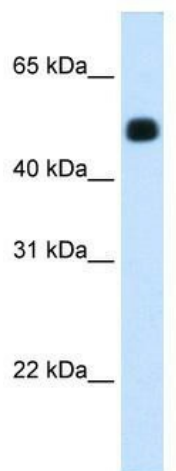


[View online »](#)

Protein Families: Druggable Genome

Protein Pathways: Butanoate metabolism, Metabolic pathways, PPAR signaling pathway, Synthesis and degradation of ketone bodies, Terpenoid backbone biosynthesis, Valine, leucine and isoleucine degradation

Product images:



WB Suggested Anti-HMGC2 Antibody Titration:
1.25 ug/ml; Positive Control: Human Liver