

## Product datasheet for TA346112

### Myoglobin (MB) Rabbit Polyclonal Antibody

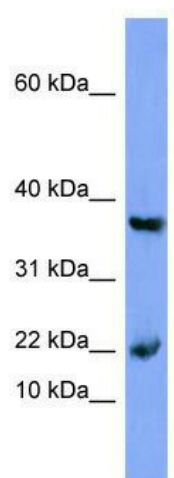
#### Product data:

Product Type:	Primary Antibodies
Applications:	WB
Recommended Dilution:	WB
Reactivity:	Human
Host:	Rabbit
Isotype:	IgG
Clonality:	Polyclonal
Immunogen:	The immunogen for anti-MB antibody: synthetic peptide directed towards the N terminal of human MB. Synthetic peptide located within the following region: MGLSDGEWQLVLNVWGKVEADIPGHGQEVLRIRLFGKHPETLEKFDKFKHL
Formulation:	Liquid. Purified antibody supplied in 1x PBS buffer with 0.09% (w/v) sodium azide and 2% sucrose. <i>Note that this product is shipped as lyophilized powder to China customers.</i>
Purification:	Affinity Purified
Conjugation:	Unconjugated
Storage:	Store at -20°C as received.
Stability:	Stable for 12 months from date of receipt.
Predicted Protein Size:	17 kDa
Gene Name:	myoglobin
Database Link:	<a href="#">NP_005359</a> <a href="#">Entrez Gene 4151 Human P02144</a>
Background:	This gene encodes a member of the globin superfamily and is expressed in skeletal and cardiac muscles. The encoded protein is a haemoprotein contributing to intracellular oxygen storage and transcellular facilitated diffusion of oxygen.
Synonyms:	myoglobin; PVALB
Note:	Immunogen Sequence Homology: Human: 100%; Horse: 93%; Pig: 86%; Goat: 86%; Sheep: 86%; Bovine: 86%; Rabbit: 86%; Mouse: 85%; Dog: 79%; Rat: 79%; Guinea pig: 79%



[View online »](#)

## Product images:



WB Suggested Anti-MB Antibody Titration: 0.2-1 ug/ml; ELISA Titer: 1: 62500; Positive Control: HT1080 cell lysate