

Product datasheet for **TA346111**

Klotho (KL) Rabbit Polyclonal Antibody

Product data:

Product Type:	Primary Antibodies
Applications:	IHC
Recommended Dilution:	IHC
Reactivity:	Human
Host:	Rabbit
Isotype:	IgG
Clonality:	Polyclonal
Immunogen:	The immunogen for anti-KL antibody: synthetic peptide directed towards the middle region of human KL. Synthetic peptide located within the following region: HAQNGKISIALQADWIEPACPFQKDKVAERVLEFDIGWLAEPFGSGD
Formulation:	Liquid. Purified antibody supplied in 1x PBS buffer with 0.09% (w/v) sodium azide and 2% sucrose. <i>Note that this product is shipped as lyophilized powder to China customers.</i>
Purification:	Affinity Purified
Conjugation:	Unconjugated
Storage:	Store at -20°C as received.
Stability:	Stable for 12 months from date of receipt.
Predicted Protein Size:	116 kDa
Gene Name:	klotho
Database Link:	NP_004786 Entrez Gene 9365 Human Q9UEF7



[View online »](#)

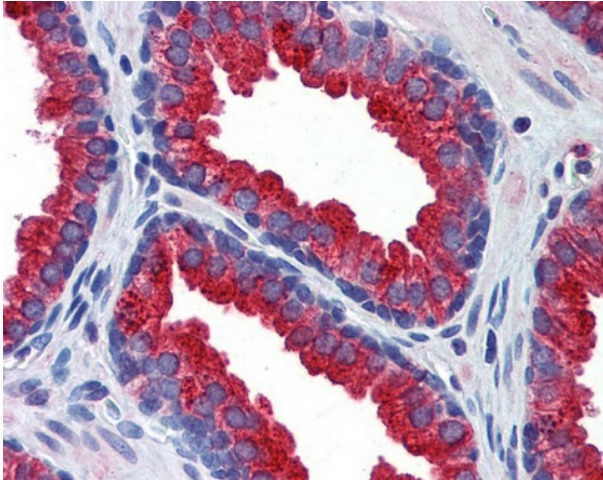
Background: KL is a type-I membrane protein that is related to beta-glucosidases. Reduced production of this protein has been observed in patients with chronic renal failure (CRF), and this may be one of the factors underlying the degenerative processes (e.g., arteriosclerosis, osteoporosis, and skin atrophy) seen in CRF. Also, mutations within this protein have been associated with ageing and bone loss. This gene encodes a type-I membrane protein that is related to beta-glucosidases. Reduced production of this protein has been observed in patients with chronic renal failure (CRF), and this may be one of the factors underlying the degenerative processes (e.g., arteriosclerosis, osteoporosis, and skin atrophy) seen in CRF. Also, mutations within this protein have been associated with ageing and bone loss. Publication Note: This RefSeq record includes a subset of the publications that are available for this gene. Please see the Entrez Gene record to access additional publications.

Synonyms: klotho; OTTHUMP00000018796

Note: Immunogen Sequence Homology: Rat: 100%; Human: 100%; Rabbit: 100%; Pig: 93%; Mouse: 93%; Guinea pig: 93%; Dog: 86%; Horse: 86%; Bovine: 79%

Protein Families: Secreted Protein, Transmembrane

Product images:



prostate