

Product datasheet for **TA346109**

Klotho (KL) Rabbit Polyclonal Antibody

Product data:

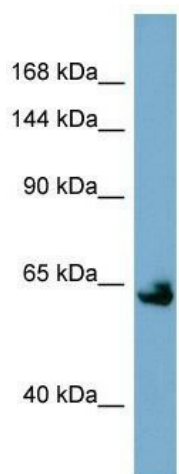
Product Type:	Primary Antibodies
Applications:	IHC, WB
Recommended Dilution:	WB, IHC
Reactivity:	Human
Host:	Rabbit
Isotype:	IgG
Clonality:	Polyclonal
Immunogen:	The immunogen for anti-KL antibody: synthetic peptide directed towards the middle region of human KL. Synthetic peptide located within the following region: GRLAPGIRGSPRLGYLVAHNLLLAHAKVWHLNTSFRPTQGGQVSIALSS
Formulation:	Liquid. Purified antibody supplied in 1x PBS buffer with 0.09% (w/v) sodium azide and 2% sucrose. <i>Note that this product is shipped as lyophilized powder to China customers.</i>
Purification:	Affinity Purified
Conjugation:	Unconjugated
Storage:	Store at -20°C as received.
Stability:	Stable for 12 months from date of receipt.
Predicted Protein Size:	60 kDa
Gene Name:	klotho
Database Link:	NP_004786 Entrez Gene 9365 Human Q9UEF7
Background:	This gene encodes a type-I membrane protein that is related to beta-glucosidases. Reduced production of this protein has been observed in patients with chronic renal failure (CRF), and this may be one of the factors underlying the degenerative processes .
Synonyms:	klotho; OTTHUMP00000018796
Note:	Immunogen Sequence Homology: Dog: 100%; Pig: 100%; Rat: 100%; Horse: 100%; Human: 100%; Mouse: 100%; Rabbit: 100%; Guinea pig: 100%; Bovine: 93%; Zebrafish: 79%



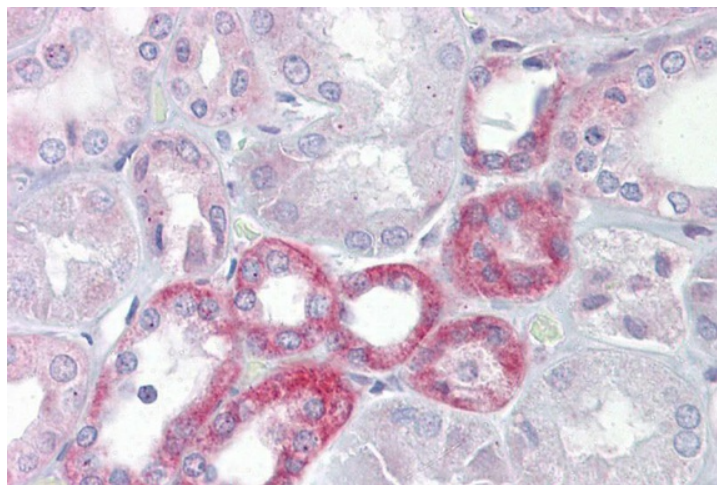
[View online »](#)

Protein Families: Secreted Protein, Transmembrane

Product images:



WB Suggested Anti-KL Antibody Titration: 0.2-1 ug/ml; ELISA Titer: 1: 62500; Positive Control: NCI-H226 cell lysate



Immunohistochemistry with Kidney tissue at an antibody concentration of 5 ug/ml using anti-KL antibody