

## Product datasheet for **TA346108**

### SLC22A6 Rabbit Polyclonal Antibody

#### Product data:

Product Type:	Primary Antibodies
Applications:	WB
Recommended Dilution:	WB
Reactivity:	Human
Host:	Rabbit
Isotype:	IgG
Clonality:	Polyclonal
Immunogen:	The immunogen for anti-SLC22A6 antibody: synthetic peptide directed towards the C terminal of human SLC22A6. Synthetic peptide located within the following region: ETLGQPLPDTVQDLESRWAPTQKEAGIYPRKKGKQTRQQQEHQKYMVPLQA
Formulation:	Liquid. Purified antibody supplied in 1x PBS buffer with 0.09% (w/v) sodium azide and 2% sucrose. <i>Note that this product is shipped as lyophilized powder to China customers.</i>
Purification:	Affinity Purified
Conjugation:	Unconjugated
Storage:	Store at -20°C as received.
Stability:	Stable for 12 months from date of receipt.
Predicted Protein Size:	62 kDa
Gene Name:	solute carrier family 22 member 6
Database Link:	<a href="#">NP_004781</a> <a href="#">Entrez Gene 9356 Human</a> <a href="#">Q4U2R8</a>



[View online »](#)

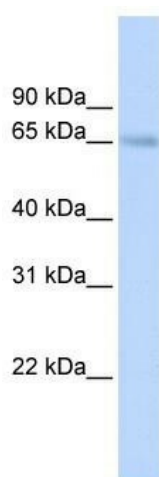
**Background:** SLC22A6 is involved in the sodium-dependent transport and excretion of organic anions, some of which are potentially toxic. The encoded protein is an integral membrane protein and may be localized to the basolateral membrane. The protein encoded by this gene is involved in the sodium-dependent transport and excretion of organic anions, some of which are potentially toxic. The encoded protein is an integral membrane protein and may be localized to the basolateral membrane. Four transcript variants encoding four different isoforms have been found for this gene.

**Synonyms:** HOAT1; OAT1; PAHT; ROAT1

**Note:** Immunogen Sequence Homology: Pig: 100%; Rat: 100%; Horse: 100%; Human: 100%; Mouse: 100%; Bovine: 100%; Rabbit: 100%; Dog: 93%; Guinea pig: 86%; Zebrafish: 85%

**Protein Families:** Transmembrane

### Product images:



WB Suggested Anti-SLC22A6 Antibody Titration:  
0.2-1 ug/ml; ELISA Titer: 1: 312500; Positive  
Control: Human Lung