

Product datasheet for **TA346098**

Uteroglobin (SCGB1A1) Rabbit Polyclonal Antibody

Product data:

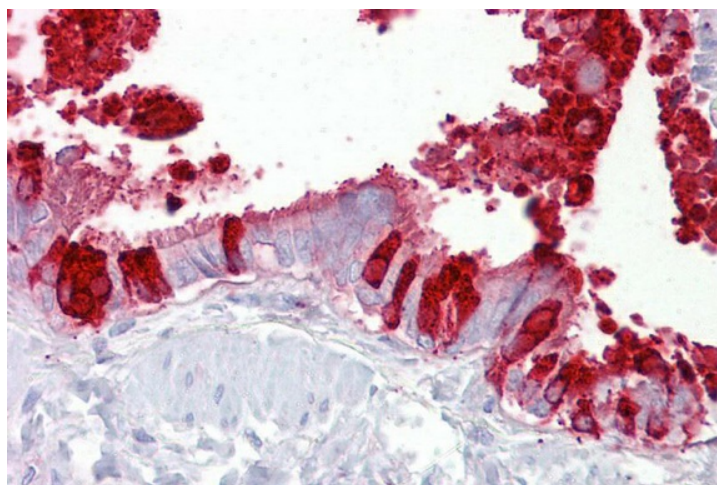
Product Type:	Primary Antibodies
Applications:	IHC, WB
Recommended Dilution:	WB, IHC
Reactivity:	Human
Host:	Rabbit
Isotype:	IgG
Clonality:	Polyclonal
Immunogen:	The immunogen for anti-SCGB1A1 antibody: synthetic peptide directed towards the middle region of human SCGB1A1. Synthetic peptide located within the following region: MDTPSSYEAAAMELFSPDQDMREAGAQLKLVDTLPQKPRESIIKLMEKIA
Formulation:	Liquid. Purified antibody supplied in 1x PBS buffer with 0.09% (w/v) sodium azide and 2% sucrose. <i>Note that this product is shipped as lyophilized powder to China customers.</i>
Purification:	Affinity Purified
Conjugation:	Unconjugated
Storage:	Store at -20°C as received.
Stability:	Stable for 12 months from date of receipt.
Predicted Protein Size:	10 kDa
Gene Name:	secretoglobin family 1A member 1
Database Link:	NP_003348 Entrez Gene 7356 Human P11684
Background:	SCGB1A1 binds phosphatidylcholine, phosphatidylinositol, polychlorinated biphenyls (PCB) and weakly progesterone, potent inhibitor of phospholipase A2.
Synonyms:	CC10; CC16; CCPBP; CCSP; UGB; UP-1; UP1
Note:	Immunogen Sequence Homology: Human: 100%; Mouse: 100%; Rat: 92%
Protein Families:	Druggable Genome, Secreted Protein



[View online »](#)

Product images:

WB Suggested Anti-SCGB1A1 Antibody Titration:
0.2-1 ug/ml; ELISA Titer: 1: 312500; Positive
Control: Human brain



Immunohistochemistry with Lung, respiratory
epithelium tissue at an antibody concentration of
5 ug/ml using anti-SCGB1A1 antibody