

## Product datasheet for **TA346097**

### SLC22A1 Rabbit Polyclonal Antibody

#### Product data:

Product Type:	Primary Antibodies
Applications:	IHC, WB
Recommended Dilution:	WB, IHC
Reactivity:	Human
Host:	Rabbit
Isotype:	IgG
Clonality:	Polyclonal
Immunogen:	The immunogen for anti-SLC22A1 antibody: synthetic peptide directed towards the N terminal of human SLC22A1. Synthetic peptide located within the following region: LSCVDPLASLATNRSHLPLGPCQDGWYDTPGSSIVTEFNLCADSWKLD
Formulation:	Liquid. Purified antibody supplied in 1x PBS buffer with 0.09% (w/v) sodium azide and 2% sucrose.
Purification:	Affinity Purified
Conjugation:	Unconjugated
Storage:	Store at -20°C as received.
Stability:	Stable for 12 months from date of receipt.
Predicted Protein Size:	61 kDa
Gene Name:	solute carrier family 22 member 1
Database Link:	<a href="#">NP_003048</a> <a href="#">Entrez Gene 6580 Human</a> <a href="#">O15245</a>



[View online »](#)

**Background:**

Polyspecific organic cation transporters in the liver, kidney, intestine, and other organs are critical for elimination of many endogenous small organic cations as well as a wide array of drugs and environmental toxins. SLC22A1 contains twelve putative transmembrane domains and is a plasma integral membrane protein. Polyspecific organic cation transporters in the liver, kidney, intestine, and other organs are critical for elimination of many endogenous small organic cations as well as a wide array of drugs and environmental toxins. This gene is one of three similar cation transporter genes located in a cluster on chromosome 6. The encoded protein contains twelve putative transmembrane domains and is a plasma integral membrane protein. Two transcript variants encoding two different isoforms have been found for this gene, but only the longer variant encodes a functional transporter.

**Synonyms:**

HOCT1; OCT1; oct1\_cds

**Note:**

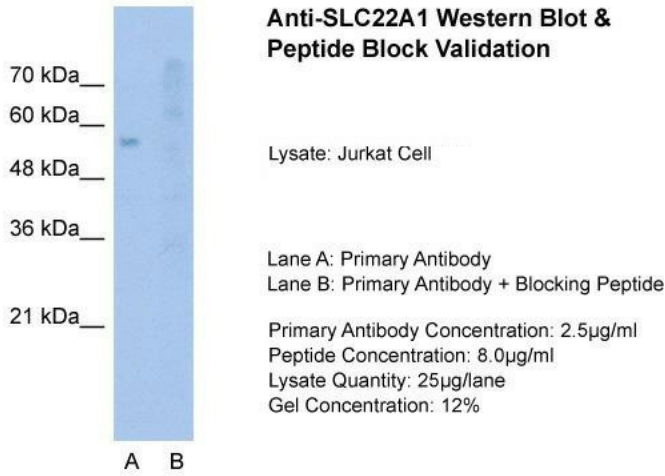
Immunogen Sequence Homology: Dog: 100%; Pig: 100%; Rat: 100%; Horse: 100%; Human: 100%; Mouse: 100%; Bovine: 100%; Rabbit: 100%; Guinea pig: 100%

**Protein Families:**

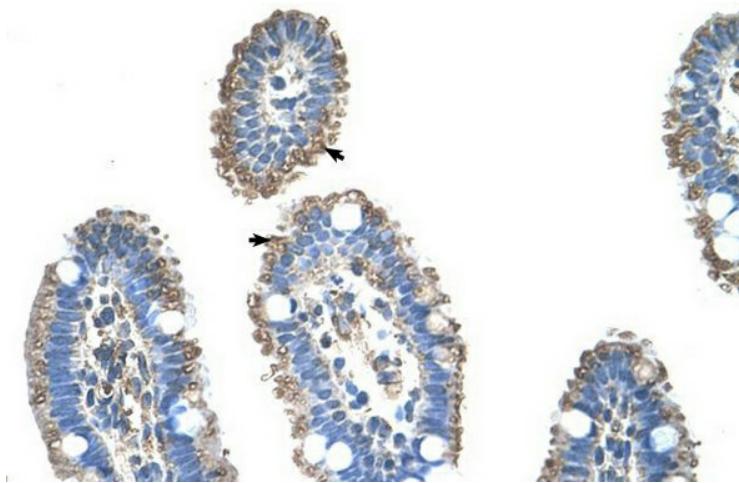
Transmembrane

**Product images:**

WB Suggested Anti-SLC22A1 Antibody Titration:  
2.5 ug/ml; Positive Control: Jurkat cell lysate



Host: Rabbit; Target Name: SLC22A1; Sample Tissue: Jurkat; Lane A: Primary Antibody; Lane B: Primary Antibody + Blocking Peptide; Primary Antibody Concentration: 2.5 ug/mL; Peptide Concentration: 8.0 ug/mL; Lysate Quantity: 25 ug/lane; Gel Concentration: 12%



Rabbit Anti-SLC22A1 Antibody; Paraffin Embedded Tissue: Human Intestine; Cellular Data: Epithelial cells of intestinal villas; Antibody Concentration: 4.0-8.0 ug/ml; Magnification: 400X