

## Product datasheet for **TA346096**

### Surfactant protein D (SFTPD) Rabbit Polyclonal Antibody

#### Product data:

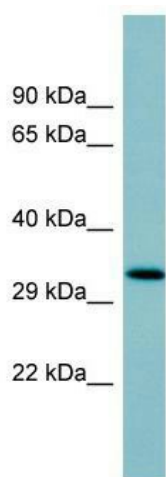
Product Type:	Primary Antibodies
Applications:	WB
Recommended Dilution:	WB
Reactivity:	Human
Host:	Rabbit
Isotype:	IgG
Clonality:	Polyclonal
Immunogen:	The immunogen for anti-SFTPD antibody: synthetic peptide directed towards the middle region of human SFTPD. Synthetic peptide located within the following region: PPGPPGVPGPAGREGPLGKQGNIGPQGKPGPKGEAGPKGEVGAAPGMQGS
Formulation:	Liquid. Purified antibody supplied in 1x PBS buffer with 0.09% (w/v) sodium azide and 2% sucrose. <i>Note that this product is shipped as lyophilized powder to China customers.</i>
Purification:	Affinity Purified
Conjugation:	Unconjugated
Storage:	Store at -20°C as received.
Stability:	Stable for 12 months from date of receipt.
Predicted Protein Size:	35 kDa
Gene Name:	surfactant protein D
Database Link:	<a href="#">NP_003010</a> <a href="#">Entrez Gene 6441 Human P35247</a>
Background:	SFTPD contributes to the lung's defense against inhaled microorganisms. SFTPD may participate in the extracellular reorganization or turnover of pulmonary surfactant.
Synonyms:	COLEC7; PSP-D; SFTP4; SP-D
Note:	Immunogen Sequence Homology: Human: 100%; Rat: 92%; Mouse: 92%; Rabbit: 86%; Pig: 85%; Guinea pig: 85%; Dog: 79%



[View online »](#)

Protein Families: Druggable Genome, Secreted Protein

### Product images:



WB Suggested Anti-SFTPD Antibody Titration: 0.2-1 ug/ml; ELISA Titer: 1: 1562500; Positive Control: Human Thymus