

Product datasheet for **TA346090**

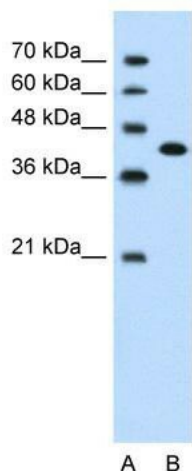
CEACAM6 Rabbit Polyclonal Antibody

Product data:

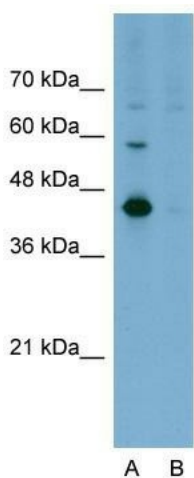
Product Type:	Primary Antibodies
Applications:	IHC, WB
Recommended Dilution:	WB, IHC
Reactivity:	Human
Host:	Rabbit
Isotype:	IgG
Clonality:	Polyclonal
Immunogen:	The immunogen for anti-CEACAM6 antibody: synthetic peptide directed towards the middle region of human CEACAM6. Synthetic peptide located within the following region: EIQNPASANRSDPVTLNVLYGPDGPTISPSKANYRPGENLNLSCHAASNP
Formulation:	Liquid. Purified antibody supplied in 1x PBS buffer with 0.09% (w/v) sodium azide and 2% sucrose. <i>Note that this product is shipped as lyophilized powder to China customers.</i>
Purification:	Affinity Purified
Conjugation:	Unconjugated
Storage:	Store at -20°C as received.
Stability:	Stable for 12 months from date of receipt.
Predicted Protein Size:	38 kDa
Gene Name:	carcinoembryonic antigen related cell adhesion molecule 6
Database Link:	NP_002474 Entrez Gene 4680 Human P40199
Background:	Many breast, pancreatic, colonic and non-small-cell lung carcinoma lines express CEACAM6 and CEACAM5, and antibodies to both can affect tumor cell growth in vitro and in vivo. CEACAM6 expression is elevated in many solid tumors, but variable as a function of histotype. It may be a promising target for antibody-based therapy.
Synonyms:	CD66c; CEAL; NCA
Note:	Immunogen Sequence Homology: Human: 100%



[View online »](#)

Product images:


WB Suggested Anti-CEACAM6 Antibody Titration: 1.25 ug/ml; Positive Control: Jurkat cell lysate

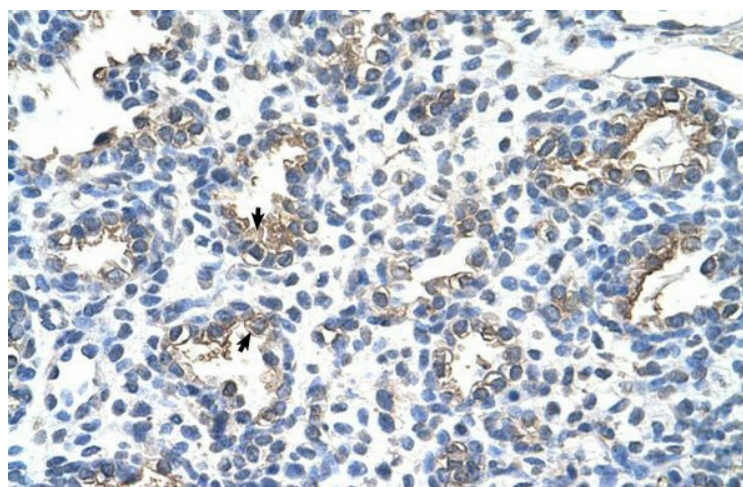

Anti-CEACAM6 Western Blot & Peptide Block Validation

Lysate: Jurkat Cell

Lane A: Primary Antibody
Lane B: Primary Antibody + Blocking Peptide

Primary Antibody Concentration: 1.25 µg/ml
Peptide Concentration: 1.0 µg/ml
Lysate Quantity: 25 µg/lane
Gel Concentration: 12%

Host: Rabbit; Target Name: CEACAM6; Sample Tissue: Jurkat; Lane A: Primary Antibody; Lane B: Primary Antibody + Blocking Peptide; Primary Antibody Concentration: 1.25 ug/mL; Peptide Concentration: 1.0 ug/mL; Lysate Quantity: 25 ug/lane; Gel Concentration: 12%



Rabbit Anti-CEACAM6 Antibody; Paraffin Embedded Tissue: Human Lung; Cellular Data: Alveolar cells; Antibody Concentration: 4.0-8.0 ug/ml; Magnification: 400X