

Product datasheet for **TA346089**

CEACAM6 Rabbit Polyclonal Antibody

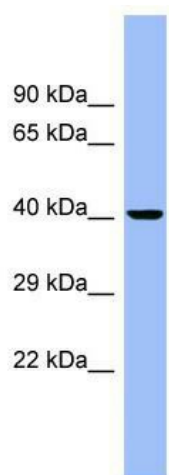
Product data:

Product Type:	Primary Antibodies
Applications:	WB
Recommended Dilution:	WB
Reactivity:	Human
Host:	Rabbit
Isotype:	IgG
Clonality:	Polyclonal
Immunogen:	The immunogen for anti-CEACAM6 antibody: synthetic peptide directed towards the N terminal of human CEACAM6. Synthetic peptide located within the following region: KLTIESTPFNVAEGKEVLLLAHNLPQNRIGYSWYKGERVDGNSLIVGYVI
Formulation:	Liquid. Purified antibody supplied in 1x PBS buffer with 0.09% (w/v) sodium azide and 2% sucrose. <i>Note that this product is shipped as lyophilized powder to China customers.</i>
Purification:	Affinity Purified
Conjugation:	Unconjugated
Storage:	Store at -20°C as received.
Stability:	Stable for 12 months from date of receipt.
Predicted Protein Size:	33 kDa
Gene Name:	carcinoembryonic antigen related cell adhesion molecule 6
Database Link:	NP_002474 Entrez Gene 4680 Human P40199
Background:	Many breast, pancreatic, colonic and non-small-cell lung carcinoma lines express CEACAM6 and CEACAM5, and antibodies to both can affect tumor cell growth in vitro and in vivo. CEACAM6 expression is elevated in many solid tumors, but variable as a function of histotype. It may be a promising target for antibody-based therapy.
Synonyms:	CD66c; CEAL; NCA
Note:	Immunogen Sequence Homology: Human: 100%; Pig: 79%; Guinea pig: 79%



[View online »](#)

Product images:



WB Suggested Anti-CEACAM6 Antibody Titration:
0.2-1 ug/ml; ELISA Titer: 1: 312500; Positive
Control: PANC1 cell lysate