

## Product datasheet for **TA346087**

### HPD Rabbit Polyclonal Antibody

#### Product data:

Product Type:	Primary Antibodies
Applications:	WB
Recommended Dilution:	WB
Reactivity:	Human
Host:	Rabbit
Isotype:	IgG
Clonality:	Polyclonal
Immunogen:	The immunogen for anti-HPD antibody: synthetic peptide directed towards the middle region of human HPD. Synthetic peptide located within the following region: EMIDHIVGNQPDQEMVSASEWYLKLNLFHFRFWSVDDTQVHTEYSSLRSIV
Formulation:	Liquid. Purified antibody supplied in 1x PBS buffer with 0.09% (w/v) sodium azide and 2% sucrose. <i>Note that this product is shipped as lyophilized powder to China customers.</i>
Purification:	Affinity Purified
Conjugation:	Unconjugated
Storage:	Store at -20°C as received.
Stability:	Stable for 12 months from date of receipt.
Predicted Protein Size:	45 kDa
Gene Name:	4-hydroxyphenylpyruvate dioxygenase
Database Link:	<a href="#">NP_002141</a> <a href="#">Entrez Gene 3242 Human P32754</a>
Background:	The protein encoded by this gene is an enzyme in the catabolic pathway of tyrosine. The encoded protein catalyzes the conversion of 4-hydroxyphenylpyruvate to homogentisate.
Synonyms:	4-HPPD; 4HPPD; GLOD3; HPPDASE; PPD
Note:	Immunogen Sequence Homology: Dog: 100%; Pig: 100%; Rat: 100%; Horse: 100%; Human: 100%; Mouse: 100%; Bovine: 100%; Rabbit: 100%; Guinea pig: 100%; Zebrafish: 79%

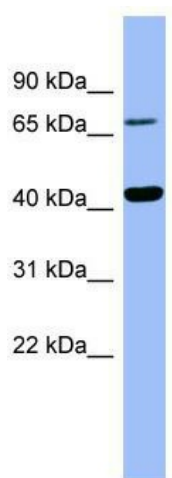


[View online »](#)

Protein Families: Druggable Genome

Protein Pathways: Metabolic pathways, Phenylalanine metabolism, Tyrosine metabolism, Ubiquinone and other terpenoid-quinone biosynthesis

### Product images:



WB Suggested Anti-HPD Antibody Titration: 0.2-1 ug/ml; ELISA Titer: 1: 62500; Positive Control: Human Spleen